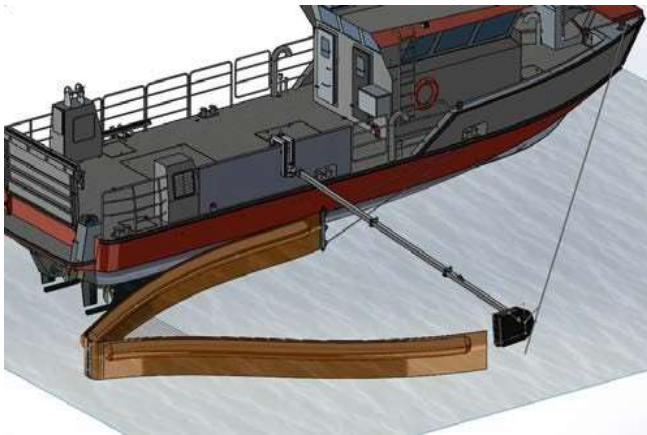


## LAMOR LOW SPEED CONTAINMENT V-SWEEP SYSTEM



### GENERAL DESCRIPTION

The low speed containment V-sweep system is a medium sized sweeping boom system that is designed to be rapidly deployed on a variety of vessels of opportunity offering a highly maneuverable oil containment system.

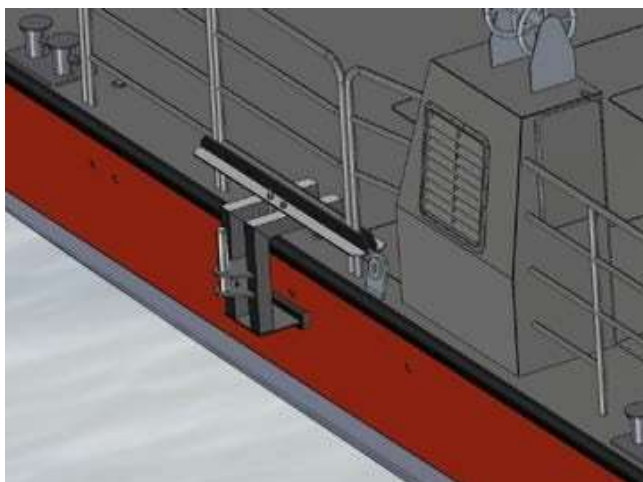
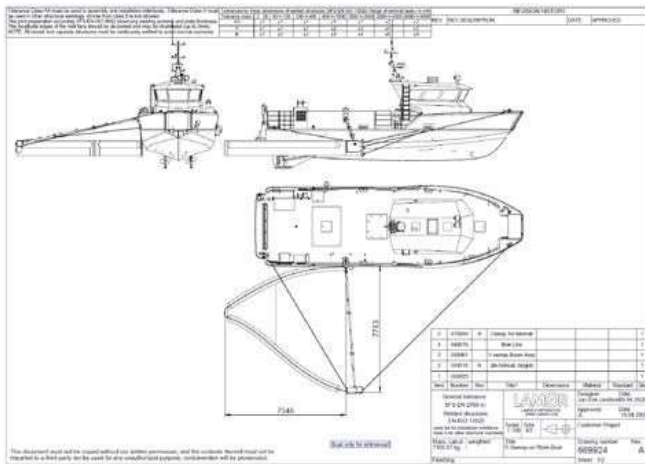
### MAIN COMPONENTS:

The system is composed of the following main components:

- 1 x Jib Arm and Float
- 2 x Containment boom
- 1 x Jib Arm Clamp Bulwarks
- 1 x Jib Arm Clamp Rail/Stanchion
- 1 x Detachable Netting Bridle
- 1 x ISO Standard 10 ft Container

### KEY CHARACTERISTICS AND OPERATIONS

- The aluminum, three-piece tube profile sectional jib arm supports and shapes the collection boom;
- The inner end of the jib arm is secured to the vessel (bulwark or rail) via a universal joint clamp allowing movement of the jib arm for deployment and during recovery operations;
- Two fendered aluminum deck clamps are provided and can be secured to the vessel bulwarks or stanchions depending on the vessel of opportunity configuration;
- The deck clamps can be installed without the need for tools;
- At the outer end of the jib arm, a 180l hydrodynamically shaped float is fitted to allow connection to the containment boom;
- Secured to the jib arm float is 9m of 900mm (overall height) air inflatable boom for the collection of encountered oil;
- A netting bridle mounted in the sweep boom maintains a V-shape in the collection apex of the boom;
- The inner end of the boom is secured to the vessel of opportunity;



## TECHNICAL SPECIFICATIONS:

### 1. Jib Arm and float

Length	7680 mm
Weight	39 kg
Material Thickness	4 mm
Jib Arm Shape	Square Tube
Profile	100x100x4 mm

### 2. Containment Boom

Length	9m
Weight	50.5 kg
Freeboard	400mm
Draft	500mm
Fabric	PVC/PU 1100 Dtex Polyester

### 3. Jib Arm Clamp Bulwarks

Length	415mm
Width	650mm
Height	866mm
Weight	33.5kg

### 3. Jib Arm Clamp Rail/Stanchion

Length	1500mm
Width	640mm
Height	675mm
Weight	34kg

## STORAGE AND TRANSPORTATION

The entire system is secured and stores in a standard 10ft ISO container, weighting in total 2.3 tonnes. This container is equipped with a single end door, non slip plywood floor, ventilation grids and container corners. Customized shelving and/or tie down points are fitted for securing the equipment.

