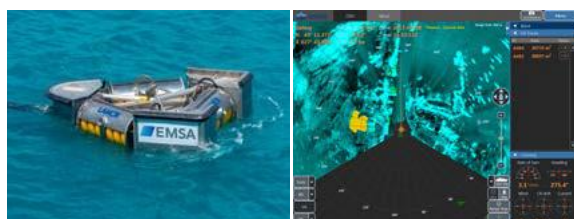


## BLACK SEA



Sweeping arm

Heavy duty boom



Skimmer

Slick detection system

**CONTRACTED VESSEL(S)****Galaxy Eco****CONTRACTOR****Cosmos Shipping AD****AREA OF ECONOMIC OPERATION****Vicinity of Varna****STOCKPILE LOCATION****Varna, Bulgaria****VESSELS TO BE MOBILISED****1****MOBILISATION TIME****Within 24 hours****SHIP OWNER****Cosmos Shipping AD**

Cosmos Shipping was established in 1993 and is currently active in the sphere of ship management, operation and chartering. The vessel in this arrangement, Galaxy Eco, provides bunkering services in the vicinity of Varna harbour. The pollution response equipment is permanently installed on-board the vessel.

**OIL POLLUTION RESPONSE EQUIPMENT****Sweeping arms**

Two Lamor rigid sweeping arms (15m) with weir/brush skimmer module (LSS 15)

**Boom**

Lamor heavy duty boom, 2x250m (HDB 2000)

**Skimmer**

Lamor offshore weir/brush skimmer (LWS 1300)

**Slick detection**

Miros oil slick detection system

**Dispersant application system**Jason twin boom spray system + dispersant tanks (capacity of 33 m<sup>3</sup> per load)**Dispersant Stockpile**

Oil spill dispersant 'Type 3', 200 tons (Radiagreen OSD)

**RPAS****ABOUT THE VESSEL**

|   |  |
|---|--|
| IMO Number                              | 9010931  |
| Flag State                              | Bulgaria   |
| Port of Registry                        | Varna  |
| Type                                    | Oil/Chemical Tanker  |
| Length                                  | 89.60m   |
| Breadth                                 | 14.00m   |
| Max. Draft                              | 6.55m  |
| DWT                                     | 2698 Ton   |
| Gross tonnage                           | 2349 Ton   |
| Storage capacity                        | 2969m <sup>3</sup> *   |
| Heating capacity                        | 2x1744 kW  |
| Pumping capacity                        | 900m <sup>3</sup> /h   |
| Propeller                               | Controllable Pitch Propeller   |
| Bow Thruster                            | Yes  |
| Max. Speed                              | 13.0 knots   |
| Class Notation                          | RINA: 100-A-1.1 - Nav IL; oil tanker ESP - DH; oil recovery ship; Ice Class IC |
| Flash point for oil recovery operations | <60°C  |

**Indicative fuel consumption main engine 24 hours**

|                                       | MDO   |
|---------------------------------------|-------|
| At Port                               | 1.5   |
| Full speed                            | 9.5   |
| At service speed                      | 7.2   |
| Low speed (oil recovery operations)   | 2.9   |
| Auxiliaries (sea passage – discharge) | 1-2.5 |
| Boiler (low – high capacity)          | 1-3   |

\* The maximum storage capacity is conditioned to the vessel being granted exemptions by the Flag State and the Requesting State, provided that the latter has ratified the BMW Convention, from the requirements of the BWM Convention for the discharge at sea of its permanent fresh ballast water. In the absence of such exemptions, the storage capacity is reduced to