

10.2.1 – Update on IMS MS Service

Users and service evolution

Samy Djavidnia - Senior Project Officer

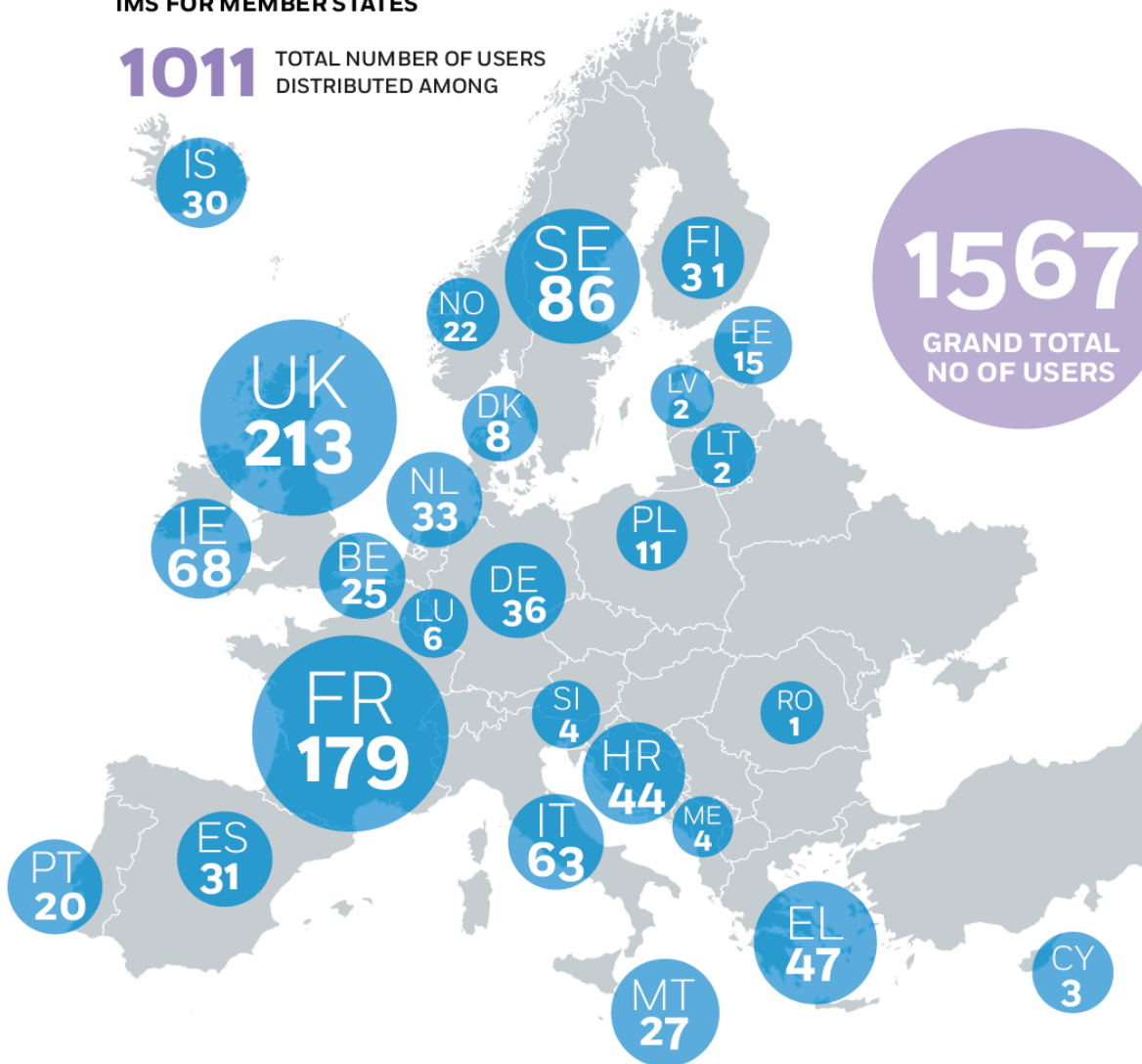
Digitalisation and Application
Development, Unit C.4

Lisbon, 19.10.2017

Overall IMS users

IMS FOR MEMBER STATES

1011 TOTAL NUMBER OF USERS
DISTRIBUTED AMONG



THEMATIC IMS SERVICES

556 TOTAL NUMBER OF USERS
DISTRIBUTED AMONG

FISHERIES MONITORING

- EFCA **59**
- DG MARE **31**
- MEMBER STATES **264**

BORDER CONTROL

- FRONTEX **19**

LAW ENFORCEMENT

- MAOC-N **17**

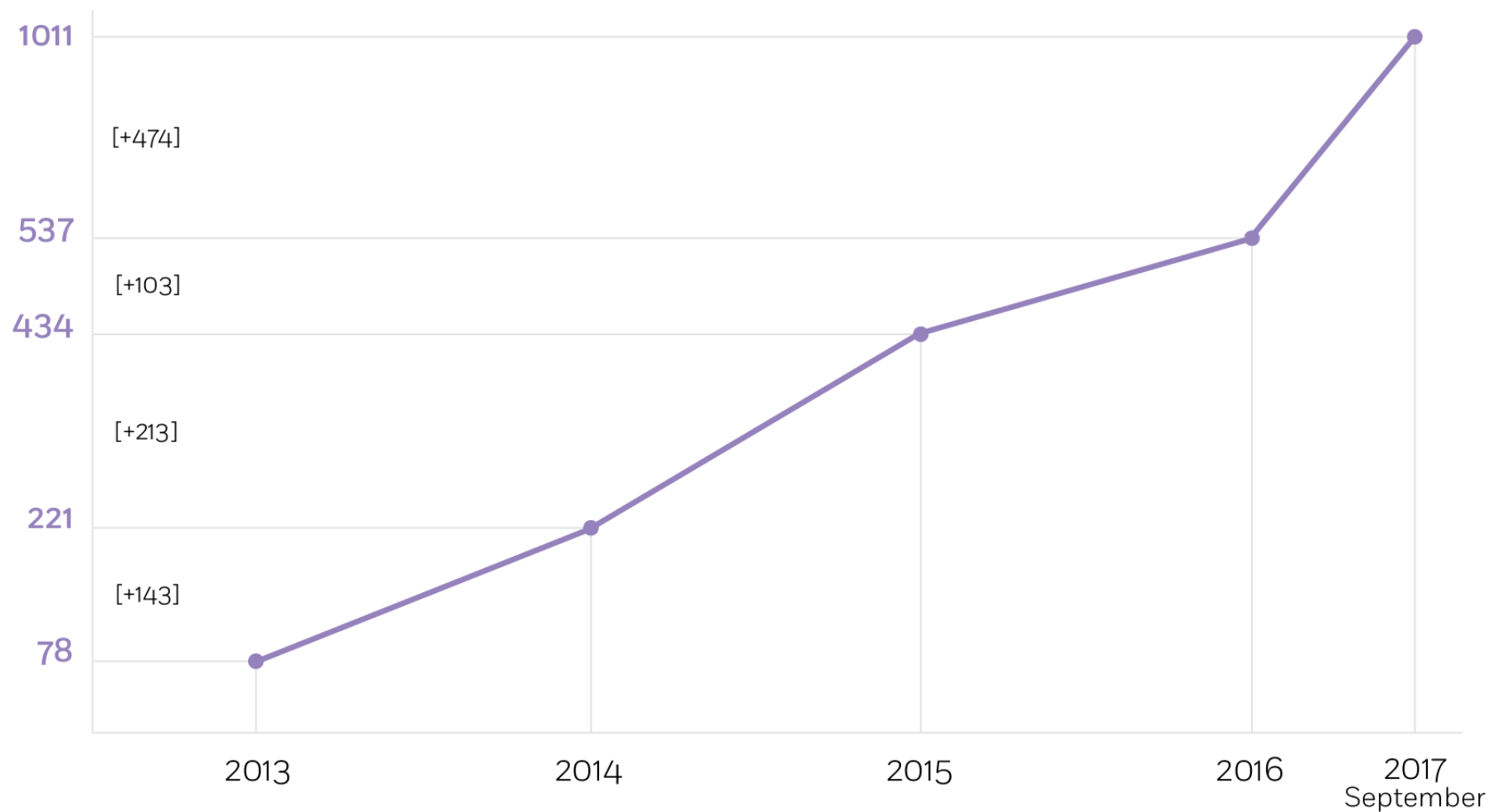
ANTI-PIRACY

- EU NAVFOR **16**

OTHER

- DG MOVE **3**
- OLAF **26**
- EMSA **121**

Evolution of IMS Member State users



Evolution of IMS Member States

26

**TOTAL OF MS INVOLVED
IN IMS OVER 5 YEARS**

2017



Montenegro



Romania



2016



Denmark



Estonia



Norway



Slovenia



Iceland



2015



Latvia



Lithuania



Luxembourg



Poland



Cyprus



2014



Belgium



Croatia



Finland



Germany



Sweden



2013



France



Greece



Ireland



Italy



Malta



Netherlands



Portugal



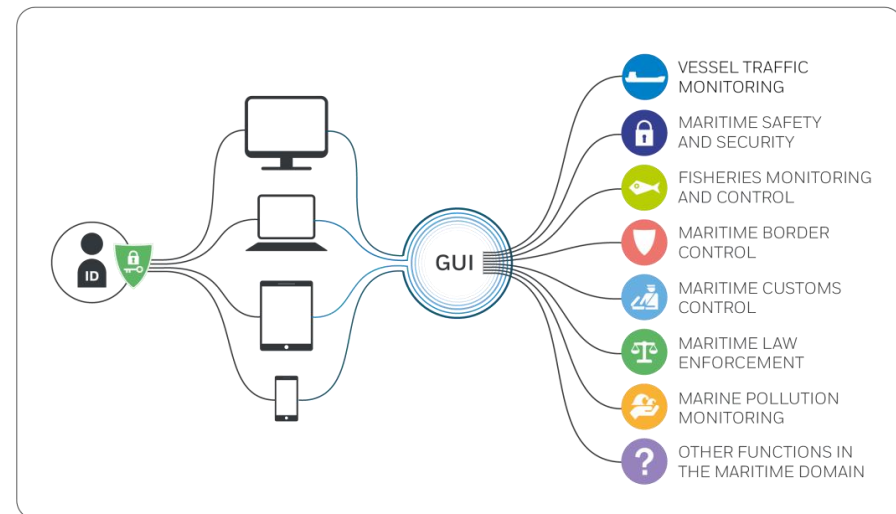
Spain



United Kingdom

What is SEG?

- New service or new graphical user interface?
- IMS, SSN, LRIT, CSN?
- Who has access to SEG?
- How can I access SEG?
- What is the App?
- Who has access to the App?
- How can I access the App?
- Operation, service, applications?
- ..and what about access rights?



IMS Transition to Operations: Web User Portal (WUP) → SEG

- **ALL** IMS Member State users have access to SEG;
- **ALL** IMS Member State users have access to App;
- WUP:
 - Enhanced SARSURPIC (Q4 2017)
 - ABM Admin Tool (Q3 2018)



While the previous IMS Web User Portal (WUP) is still accessible, users should note that SEG is the official graphical user interface supported for the IMS Member State service.

Other services will “transit to operations” later on...(SSN/LRIT, CSN, IMS EFCA, etc.)

Regular training sessions at EMSA

- For end-users: 2 sessions, 30 users
- Train-The-Trainer: 4 sessions, 60 users



Training at MS by EMSA

- 1 session Irish Coast Guard, 27 users

Demos and trainings at MS & provided by MS

- FR, DE, BE, HR



Webinars

- 9 sessions, including 3 customized for specific communities

Active S2S interfaces

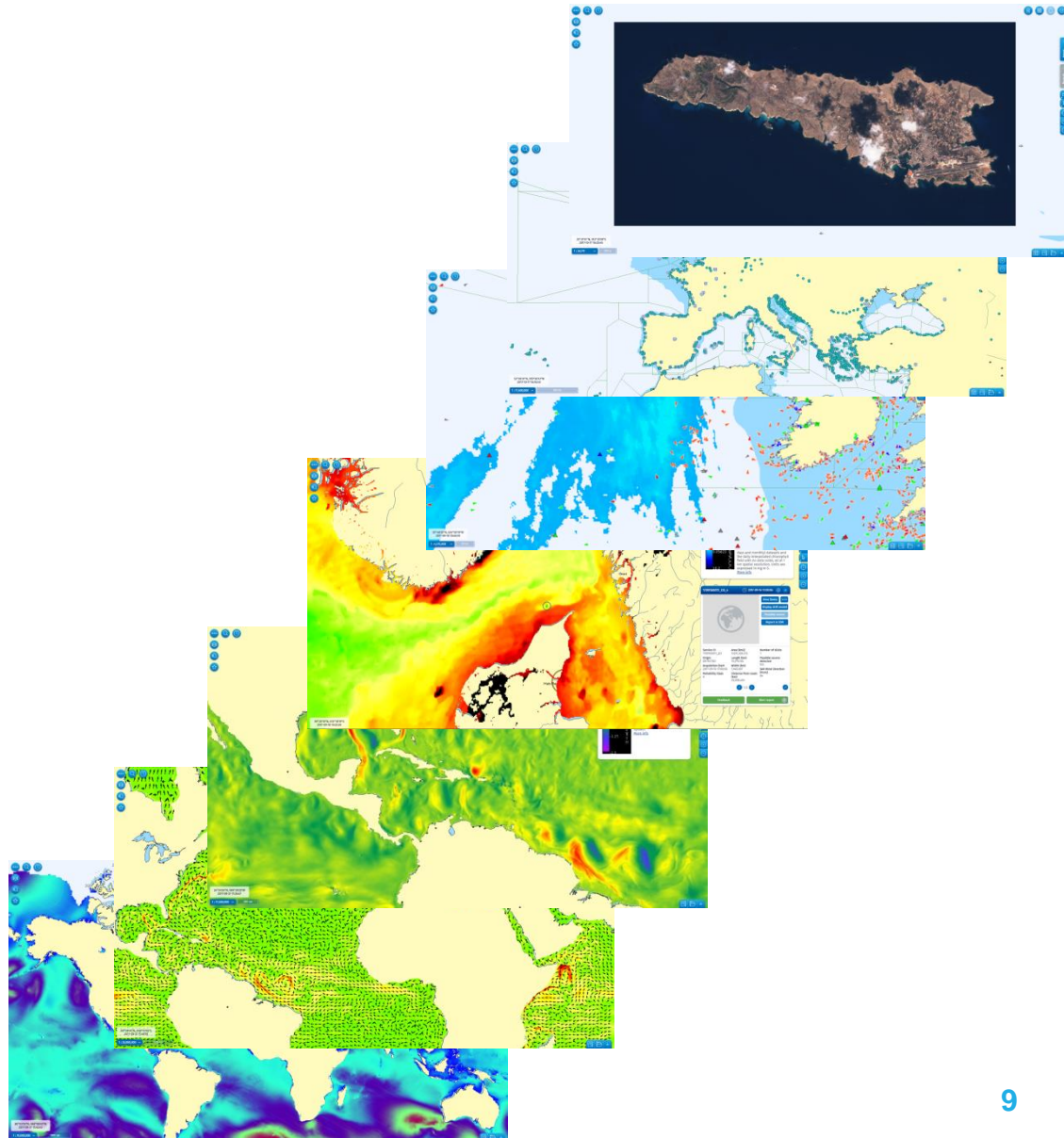
MS	Data type and coverage	Interface used
IT (Italian Navy)	Satellite AIS – Area of Interest	SSN Streaming Interface ver. 1.1 (SSN Proxy solution)
IT (Italian CG)	Satellite AIS – global feed	SSN Streaming Interface ver. 1.1 (SSN Proxy solution)
PL	Satellite AIS – global feed	SSN Streaming Interface ver. 1.1 (SSN Proxy solution)
PT (Navy)	Satellite AIS – global feed	WMS OGC layer

S2S interfaces requested and/or in development

MS	Data type and coverage	Interface to be used
PL & IE	EO VDS (Uncorrelated & Correlated)	WFS OGC Layer
IE, FR, IS, PT	Satellite AIS – global feed	SSN Streaming Interface ver. 1.1 (SSN Proxy solution)

New Highlights

- SSN Port+ Notifications
- SSN Port+ Details
- Copernicus EO Services
- Met-ocean
- Thetis Public data
- STMID & Ports
- Sentinel-2 full catalogue





 twitter.com/emsa_lisbon
 facebook.com/emsa.lisbon

 **EMSA**
European Maritime Safety Agency