

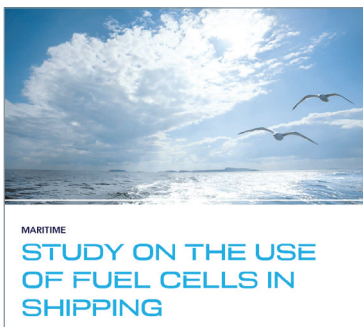


EMSA'S 2017 PRIORITIES SHARED BEFORE EP'S TRANSPORT COMMITTEE

On 25 January EMSA's Executive Director presented the highlights and main tasks of the Agency in the year to come to the European Parliament's Transport committee. The lively discussion with the MEPs focussed primarily on EMSA's new role regarding European Cooperation on Coast Guard Functions and the services EMSA will provide in this context. The meeting also gave Mr Mylly the opportunity to congratulate the newly appointed chair of the committee, Ms Karima Delli.

EMSA STUDY ON THE USE OF FUEL CELLS IN SHIPPING

EMSA's study on the use of Fuel Cells in Shipping is now published and available on the website. The fuel cell study, developed in close cooperation with DNV-GL, represents an important initiative at the forefront of sustainability in shipping. It is designed to assist both the European Commission and EU member states by offering a consolidated reference on fuel cell applications in shipping. Fuel cells are a promising technology in the context of clean power sustainability and alternative fuels. Various developments on fuel cells are already available today, with research and pilot projects showing strong potential for further scaled up implementation.



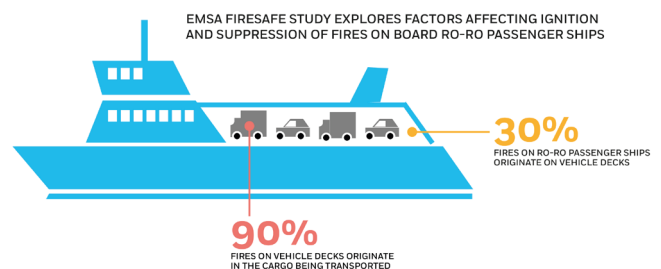
VISITS AND INSPECTIONS ACTIVITIES GAIN QUALITY ASSURANCE CERTIFICATION

Following on from the successful implementation process carried out in 2016, EMSA's visits and inspections activities were certified by TÜV Rheinland Cert GmbH in compliance with the ISO 9001:2015 Standard for Quality Management System. The V&I QMS certification demonstrates EMSA's commitment to provide the highest quality of services to its stakeholders and is the first step towards introducing quality assurance as an integrated feature of EMSA's management and culture.



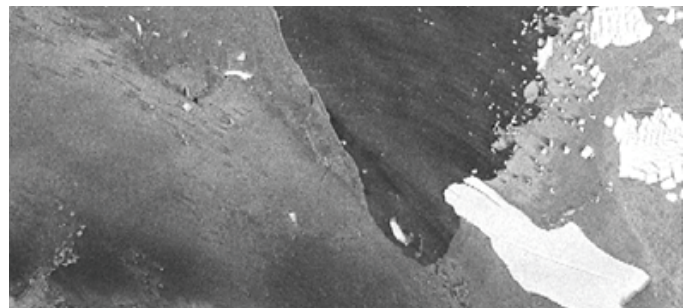
EMSA PUBLISHES FINAL REPORT OF THE FIRESAFE STUDY

The study, which is part of the work that the Agency has undertaken on fires on ro-ro passenger ships, was conducted by SP Technical Research Institute of Sweden, Bureau Veritas and Stena Line. EMSA decided to focus on electrical fire as ignition risk and fire extinguishing failure, after consultation with experts from Maritime Administrations and Accident Investigation Bodies. The study showed that approximately 30% of fires on ro-ro passenger ships originate on the vehicle deck and 90% of these, in the cargo being transported. FIRESAFE suggested a number of risk control measures in order to mitigate the associated risk, and concluded that cost efficient measures can be taken to reduce the risk for both focus areas.



SAFE NAVIGATION VIA COPERNICUS MARITIME SURVEILLANCE SERVICE

The Copernicus Maritime Surveillance (CMS) service was called upon recently to provide support to the French Polar Institute (IPEV) in the Antarctic, at the request of the European External Action Service (EEAS). IPEV wanted to assess the feasibility of using earth observation information for safety of navigation in ice conditions. The CMS service was able to assist the IPEV logistics ship in identifying safe navigation routes through the ice pack. Given the limited bandwidth of the vessel, earth observation information was downloaded first to the Antarctic coastal support station, and then split into smaller files to be sent on to the vessel. In reaction to the first images sent, the EEAS responded, "We got the images and they are great. The captain is very enthusiastic. He has already been able to identify an area where he can cross the icepack."



Earth observation image showing ice formation in the Antarctic region

emsa.europa.eu

CAREERS: National Experts in Professional Training Programme (27/2/2017); PO for Horizontal Analysis (13/2/2017); PO for the RPAS Data Centre (13/2/2017); PO for RPAS sensors (13/2/2017)

PROCUREMENT: Study on hazardous materials (PFOS & HBCDD) (23/2/2017)

PUBLICATIONS: Study on the management of ship generated waste on board ships; Single Programming Document