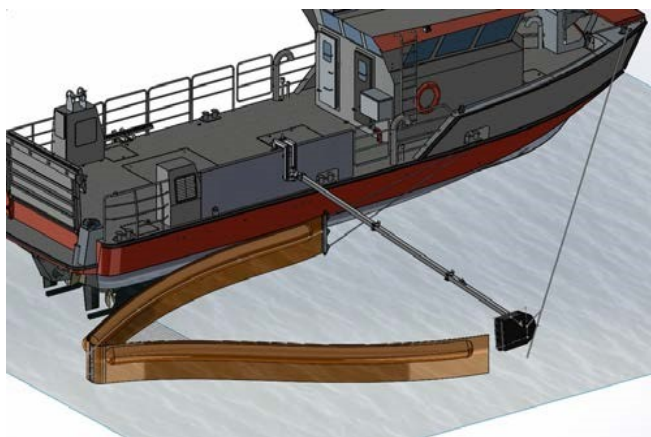


LAMOR LOW SPEED CONTAINMENT SIDE SWEEP SYSTEM



GENERAL DESCRIPTION

Low speed containment side sweep system is a medium sized sweeping boom system that is designed to be rapidly deployed on a variety of vessels of opportunity offering a highly maneuverable oil containment system.

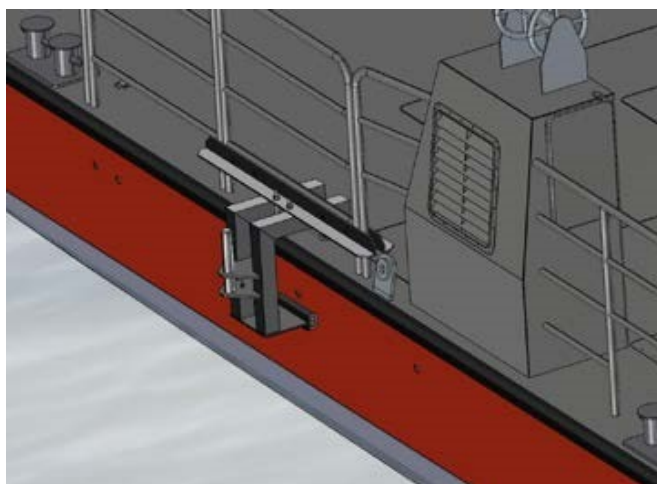
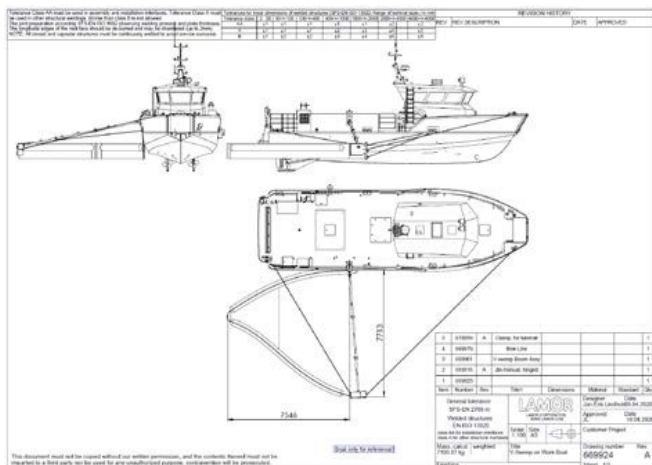
MAIN COMPONENTS:

The system is composed of the following main components:

- 1 x Jib Arm and Float
- 2 x Containment boom
- 1 x Jib Arm Clamp Bulwarks
- 1 x Jib Arm Clamp Rail/Stanchion
- 1 x Detachable Netting Bridle
- 1 x ISO Standard 10 ft Container

KEY CHARACTERISTICS AND OPERATIONS

- The aluminum, three-piece tube profile sectional jib arm supports and shapes the collection boom. Jib arm and float require 8m deck space to be assembled. It can also be stored on the railing during transit.
- Two fendered aluminum deck clamps are provided and can be secured to the vessel bulwarks or stanchions depending on the vessel of opportunity configuration.
- The deck clamps can be installed without the need for tools.
- Secured to the jib arm float is a 9m of 900mm (overall height) air inflatable boom with a sweep width of approx. 7,5m.
- A netting bridle mounted in the sweep boom maintains a V-shape in the collection apex of the boom.
- The system requires two to three operators depending on installation and deck equipment such as crane availability on the vessel.
- Vessel requirements;
 - Minimum length 12m
 - Deep V-keel allows for better maneuverability
 - Dual shaft drive is preferred propulsion
 - Deck crane will ease the deployment and retrieval of the jib arm.
 - Bulwark or rail for fastening of jib arm fitting



TECHNICAL SPECIFICATIONS:**1. Jib Arm and float**

Length	7680 mm
Weight	67 kg
Material Thickness	4 mm
Jib Arm Shape	Square Tube
Profile	100x100x4 mm

2. Containment Boom

Length	9m
Weight	50.5 kg
Freeboard	400mm
Draft	500mm
Fabric	PVC/PU 1100 Dtex Polyester

3. Jib Arm Clamp Bulwarks

Length	415mm
Width	650mm
Height	866mm
Weight	33.5kg

3. Jib Arm Clamp Rail/Stanchion

Length	1500mm
Width	640mm
Height	675mm
Weight	34kg

STORAGE AND TRANSPORTATION

The entire system is secured and stored in a standard ISO, 10 ft container, weighing 2,3 tons in total. This container is equipped with a single end door, non slip plywood floor, ventilation grids and container corners. Customized shelving and/or tie down points are fitted for securing the equipment.

