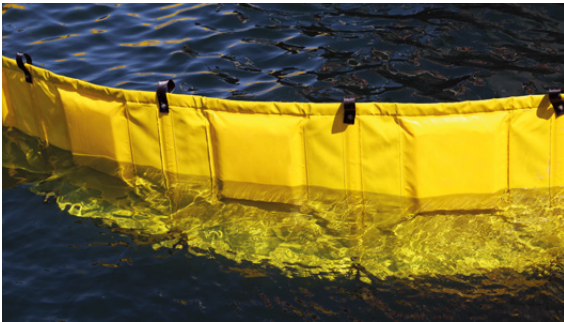


SOLID FLOTATION BOOM

SCORPION 750F FENCE TYPE OIL BOOM (NEW NAVAL)



GENERAL DESCRIPTION

The Scorpion 750F Fence Boom is a lightweight, flexible boom that is ideal for near shore. The slim boom format allows it to neatly fold upon itself allowing compact storage. The compact design of the boom makes it easy to deploy and recover. The high rigidity, durability, buoyancy and strength of the boom, provided by thin foam floats, make it ideal for installations to ports, marinas and moorages.

MAIN COMPONENTS

The system is composed of the following main components:

- 400m x Scorpion 750F Fence Oil Boom with ASTM Connectors
- 2 x ScorStore Boom Storage Crates of 200m boom capacity each
- 4 x ScorTow Boom Towing Sets
- 8 x ScorAnchor Boom Anchoring Sets
- 2 x Heavy Duty Covers for Crates
- 1 x Maintenance and Repair Kit

KEY CHARACTERISTICS

- Manufactured from high visibility PVC-coated Polyester fabric 750gr/m².
- Closed-cell PET foam cylindrical floats provide unmatched reliability and optimal buoyancy.
- Tensioning is achieved with PET webbing and galvanized chain.
- Storage crates offer rapid deployment fence boom with minimum personnel required. Made from marine grade materials.

TECHNICAL SPECIFICATIONS

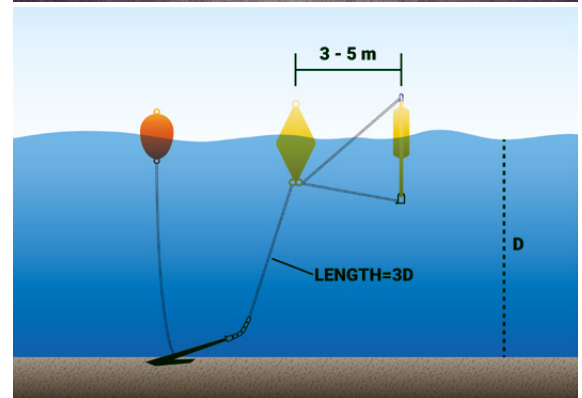
Scorpion 750F Fence Oil Boom

OPERATIONAL HEIGHT	750 MM
OPERATIONAL FREEBOARD	750 MM
DRAFT	500 MM
BOOM TENSILE STRENGTH	28,439 N
TEXTILE TENSILE STRENGTH	3,200/3,300 N/50 MM
SECTION LENGTH	20 M
WEIGHT	3.8 KG/M
FLOATS	CLOSED CELL PET FOAM
FABRIC	PVC COATED PE 750GR/M ²
CONNECTORS	ALUMINIUM Z-TYPE ASTM
BALLAST	HDBG CHAIN, 10 MM DIN 766
COLOR	HIGH VISIBILITY YELLOW



ScorStore Boom Storage Crate

STORAGE CAPACITY	200 M OF BOOM
LENGTH	3000 MM
WIDTH	2000 MM
HEIGHT	1600 MM
LIFTING INTERFACE	FORKLIFT POCKETS & LIFTING EYES
MATERIAL	EPOXY COATED MILD STEEL
WEIGHT	270 KG (NET)



STORAGE & TRANSPORT

The boom is stored in a storage crate with incorporated runners for quick deployment and forklift channels as well as eyelets for safe lifting and transporting.

OPERATIONS

- █ Remove the protective storage cover and lift the crate, if needed, by the appropriate lifting interface and place it in the operational deployment area with enough room to remove the boom from the crate and to safely deploy the boom.
- █ Once the crate is in position, remove the crate's securing beam and connect the rope lead to the tow bridle of the outer sections of the hanging boom.
- █ Pass the rope lead from the connected tow bridle to the support vessel and secure to a post on board.
- █ Operators can now slide the boom of the crate through the rails to the deployment area, and into the sea.
- █ The vessel can support the deployment of the boom by providing slight tension on the boom and guiding the deployment.
- █ Once the boom has been completely deployed from the crate, secure the end to connect the next segment of boom from other crates. Use the anchoring set to properly moor the boom.