



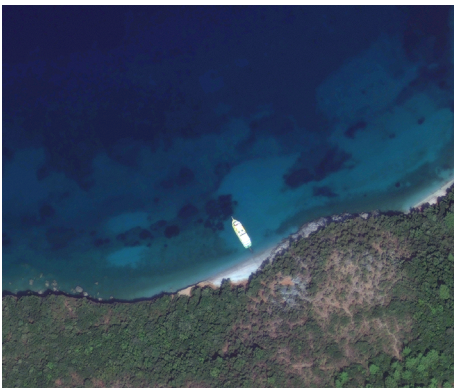
## OVERVIEW

The Copernicus Maritime Surveillance (CMS) service supports coastal state authorities operating in the law enforcement domain with a wide range of near real time earth observation information to help them detect and identify unlawful activities.

Maritime law enforcement encompasses a wide range of functions, including measures against trafficking and smuggling of contraband (e.g. narcotics, arms or other goods); piracy and armed robbery, illegal pollution (e.g. oil discharges from ships) and other environmental crimes. Coastal state authorities can use earth observation data to detect and identify unlawful activities, which often occur in locations that are difficult to monitor and involve either small vessels which do not send position alerts, or larger vessels which have switched off their position reporting systems.

If intelligence information indicates that an illegal activity may be taking place in an area, law enforcement officials

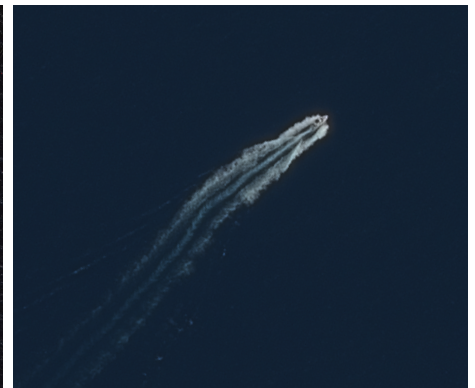
might want to identify particular types of vessel behaviour, for example a rendezvous-at-sea by two vessels or a vessel falsifying its' reported position. Satellite-based vessel detection integrated with other vessel data, provided by the CMS service, enables authorities to identify suspicious activities and potential threats. High resolution optical images can provide valuable insight into what kinds of vessels are operating from uncontrolled areas, such as desert beaches. These are potential launching and landing sites for a wide range of illegal activities. These images can also help provide vessel identities and information, such as objects on deck.



Beaches are ideal for the smuggling of goods



Optical images can reveal objects on deck



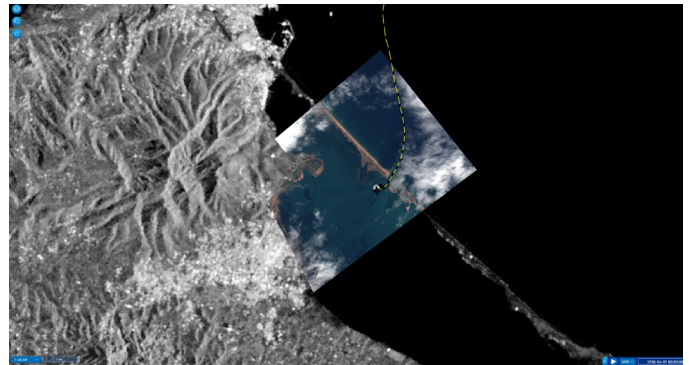
Speedboats are often used in illicit activities



## OVERVIEW

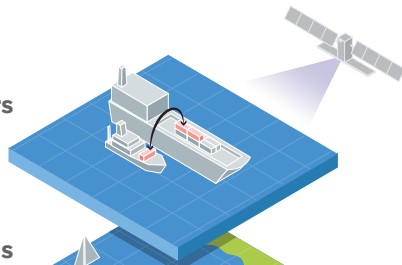
### CMS SUPPORTS LAW ENFORCEMENT THROUGH:

- the detection and tracking of suspicious targets
- monitoring of shorelines
- identification of vessels carrying out suspicious activities

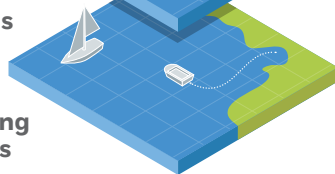


Overlaying satellite images with data from EMSA's systems gives the user a broad understanding of the maritime scene

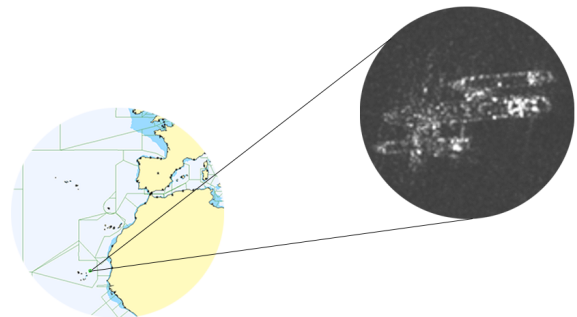
#### Ship-to-ship transfers



#### Non-reporting vessels



#### Small vessels departing from remote locations



Illegal transhipment detected in a SAR image

[emsa.europa.eu/copernicus](https://emsa.europa.eu/copernicus)

### Get in touch for more information

#### Copernicus Maritime Surveillance

[Twitter CopernicusCMS](#) / [copernicus@emsa.europa.eu](mailto:copernicus@emsa.europa.eu)

#### Copernicus

[Twitter CopernicusEU](#) / [Facebook Copernicus EU](#)

#### European Maritime Safety Agency

Praça Europa 4  
1249-206 Lisboa Portugal

Tel +351 21 1209 200 / Fax +351 21 1209 210

[emsa.europa.eu](https://emsa.europa.eu) / [Twitter EMSA\\_LISBON](#)

#### CREDITS

© European Maritime Safety Agency 2020

Image credits in order of appearance: © 2020 European Space Imaging/DigitalGlobe, A Maxar Company; © CNES (2020), Distribution Airbus DS; © EMSA, 2019, contains modified RADARSAT-2 and GEOEYE-1 data. All rights reserved. Certain parts are licenced under conditions to EMSA; © EMSA, 2016, contains modified RADARSAT-2 data. All rights reserved. Certain parts are licenced under conditions to EMSA.