

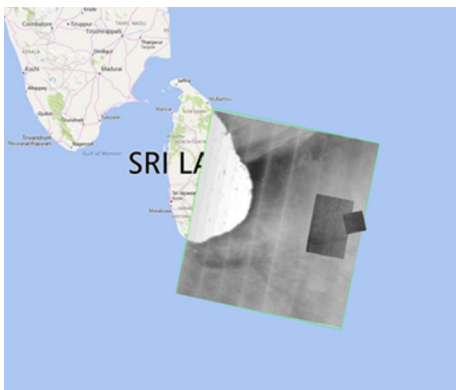


OVERVIEW

The Copernicus Maritime Surveillance (CMS) service provides maritime surveillance support to international organisations promoting the European Union's Common Foreign and Security Policy (CFSP) and related policies and strategies. Activities in the maritime domain are often inherently transboundary, and successful operations rely on mutual cooperation and the exchange of data – including earth observation data – and intelligence to address issues of regional or global concern.

International cooperation enables actors to share costs, resources and expertise as well as to address common problems in a collaborative and focused way. In the area of maritime surveillance, bi-lateral or multi-lateral approaches can bring significant benefits. This kind of cooperation is often coordinated through specific organisations or programmes established for the purpose of discharging specialised tasks. On request, CMS provides support to such relevant international organisations in consultation with and based on the approval of DG-GROW and the European External Action Service (EEAS).

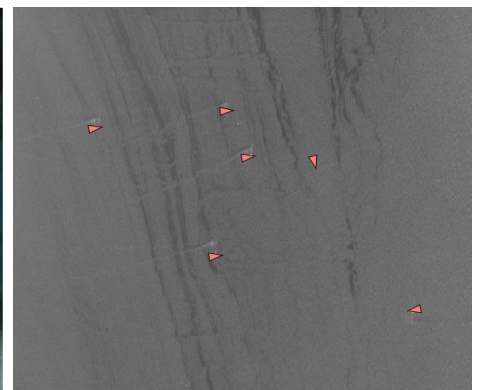
The type of data which is of interest to international organisations varies considerably depending up on the type of programme, project or operation in which they are engaged. Services that can be offered comprise of the full range of image products obtained from earth observation satellites with Synthetic Aperture Radar [SAR] or optical sensors, as well as value-added products such as the detection and classification of vessels based on automatic algorithms (Vessel Detection System [VDS] data) and vessel position reports.



Images offered depend on the type of project



CMS monitors shoreline activities



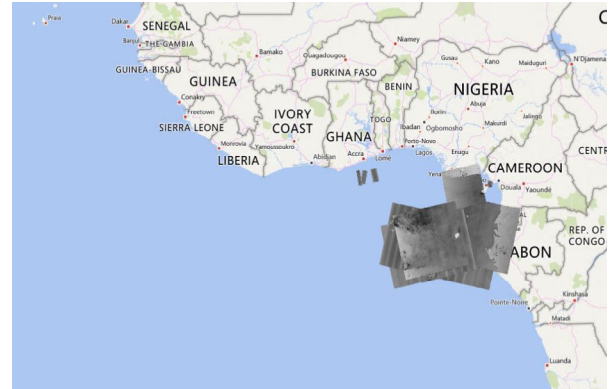
Value-added products include VDS data



OVERVIEW

CMS SUPPORTS INTERNATIONAL ORGANISATIONS THROUGH:

- wide area surveillance with vessel detection and correlation of reporting and non-reporting vessels
- high resolution imagery to provide detailed information on specific vessels and activities for intelligence-led operations
- monitoring of shoreline activities



CMS provides support to international organisations in accordance and with the approval of DG-GROW and EEAS



High resolution imagery provide detailed information for intelligence-led operations

emsa.europa.eu/copernicus

Get in touch for more information

Copernicus Maritime Surveillance

[Twitter CopernicusCMS](#) / copernicus@emsa.europa.eu

Copernicus

[Twitter CopernicusEU](#) / [Facebook Copernicus EU](#)

European Maritime Safety Agency

Praça Europa 4

1249-206 Lisboa Portugal

Tel +351 21 1209 200 / Fax +351 21 1209 210

emsa.europa.eu / [Twitter EMSA_LISBON](#)

CREDITS

© European Maritime Safety Agency 2020

Image credits in order of appearance: © 2020 European Space Imaging/DigitalGlobe, a Maxar Company; © EMSA, 2020, contains modified RADARSAT-2 data. All rights reserved. Certain parts are licenced under conditions to EMSA; RADARSAT-2 Data and Products © MacDONALD, DETTWILER AND ASSOCIATES LTD 2020 – All Rights Reserved. RADARSAT is an official mark of the Canadian Space Agency; UNODC.