

Introduction to the SafeSeaNet Ecosystem GUI

Welcome and learning objectives

Lisbon / 12 May 2017

Aim:

- Introduction to the GUI, to get you 'up-and-running'
- Understanding of how EMSA IUU worldwide pilot project service may support fisheries control

Process:

- Live demo's of the GUI and IMS App
- 'Hands-on' the GUI, exercises and operational scenarios developed by EFCA + EMSA

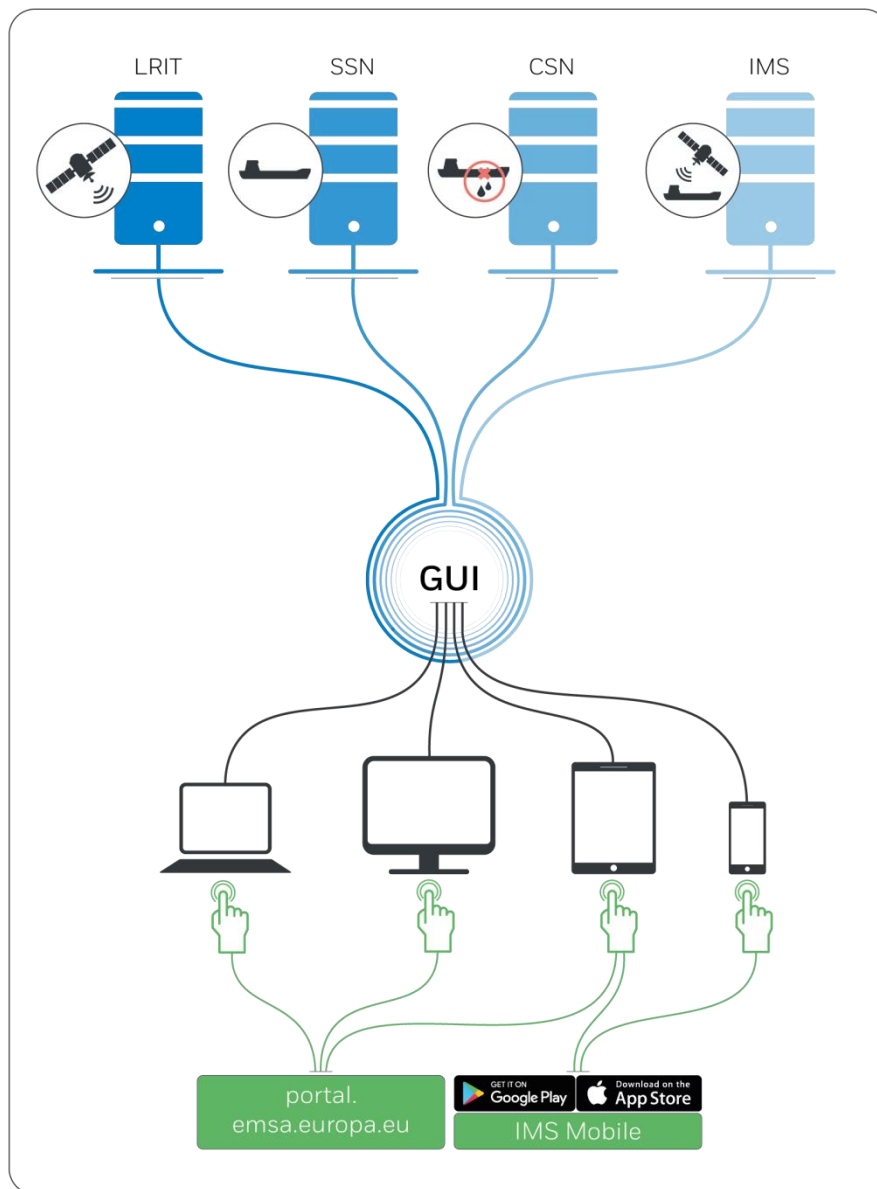
12 May 2017

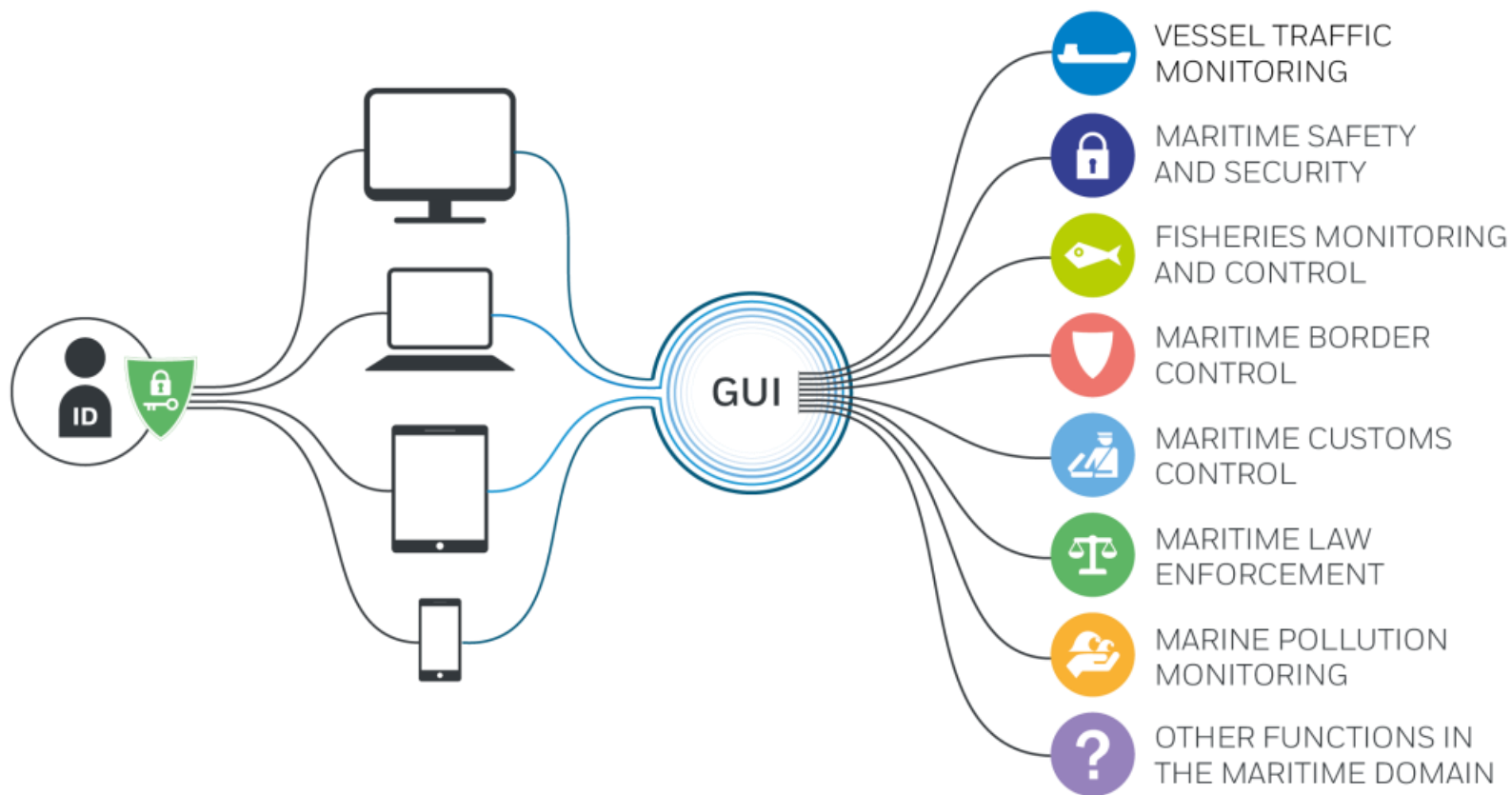
Time	Agenda Item
08:45 – 09:00	Registration
09:00 – 09:15	Welcome
09:15 – 10:30	Introduction to the SEG (Demo and hands-on) <ul style="list-style-type: none"> ■ Background ■ Design principles and general layout (clustering, elements of the interface, icons, navigation) ■ Data permissions ■ User preferences, settings
10:30 – 10:45	Coffee
10:45 – 12:30	Main features and functions (Demo and exercise) <ul style="list-style-type: none"> ■ Smart search ■ Layer management ■ Command and info ■ Alerts, Apps ■ SSN enrichment ■ TTT panel - Table, Thumbnails and Timeline ■ Earth Observation data (Copernicus)
12:30 – 14:00	Lunch break
14:00 – 15:15	Main features and functions (cont.) (Demo and exercise) <ul style="list-style-type: none"> ■ Queries: Vessel Track Query, ISP, Area Centric Query
15:15 – 15:30	Coffee break
15:30 – 16:45	Operational scenarios developed by EFCA <ul style="list-style-type: none"> ■ Mobile App (Demo)
16:45 – 17:00	<ul style="list-style-type: none"> ■ Review and wrap-up. End.

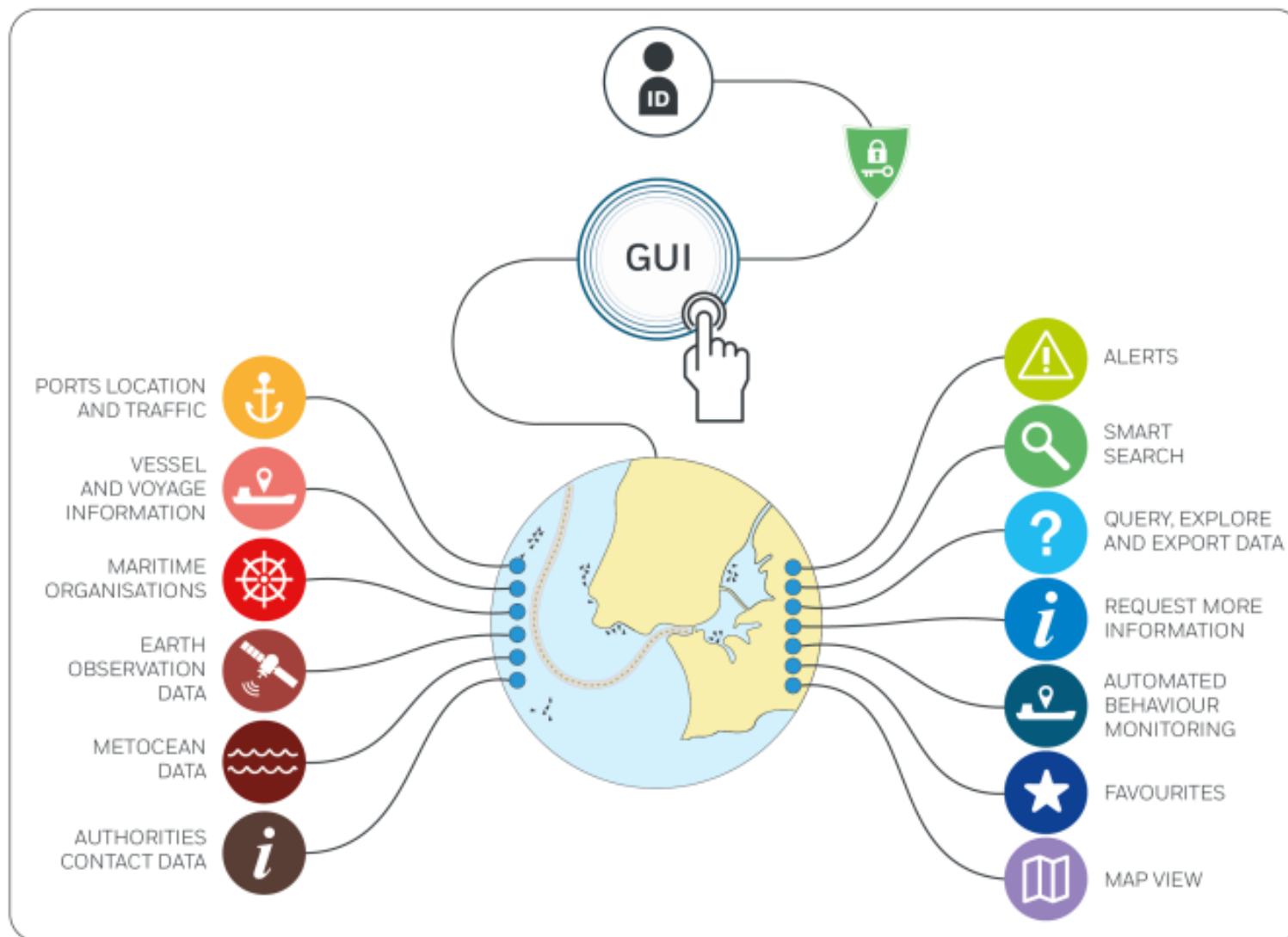
SEG Initial Operations Phase

- SEG v1.1 is live and has been provided to a number of voluntary IMS and SSN users
- Aim of the Initial Operations Phase (IOP), is to offer to few users within Member States and EU Bodies an opportunity to validate the new user interface before opening it gradually to all users.

New Common Graphical User Interface

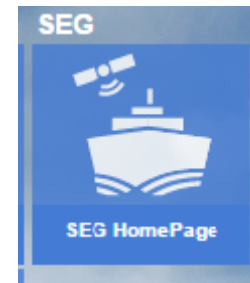




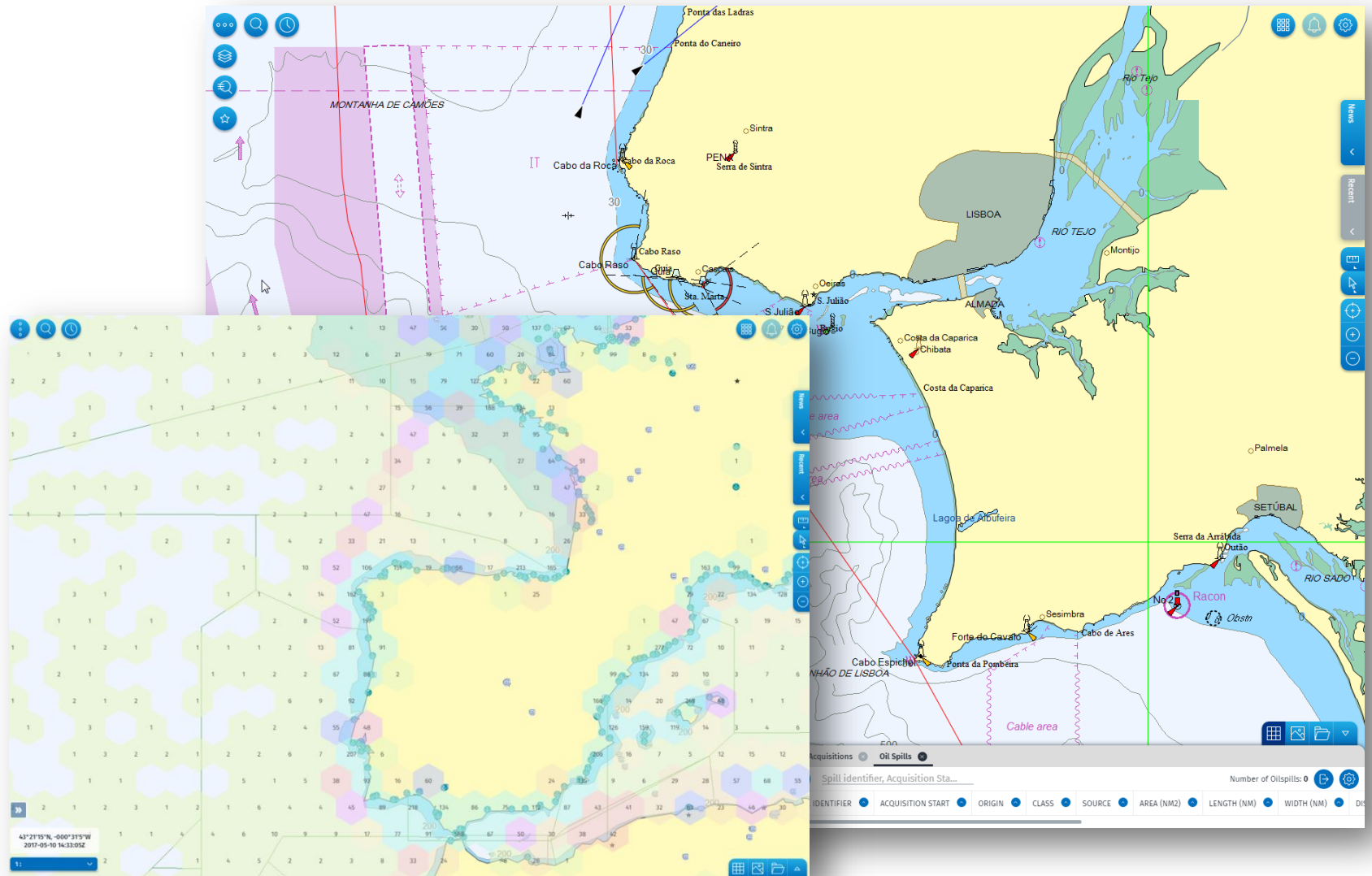


Access to the SEG

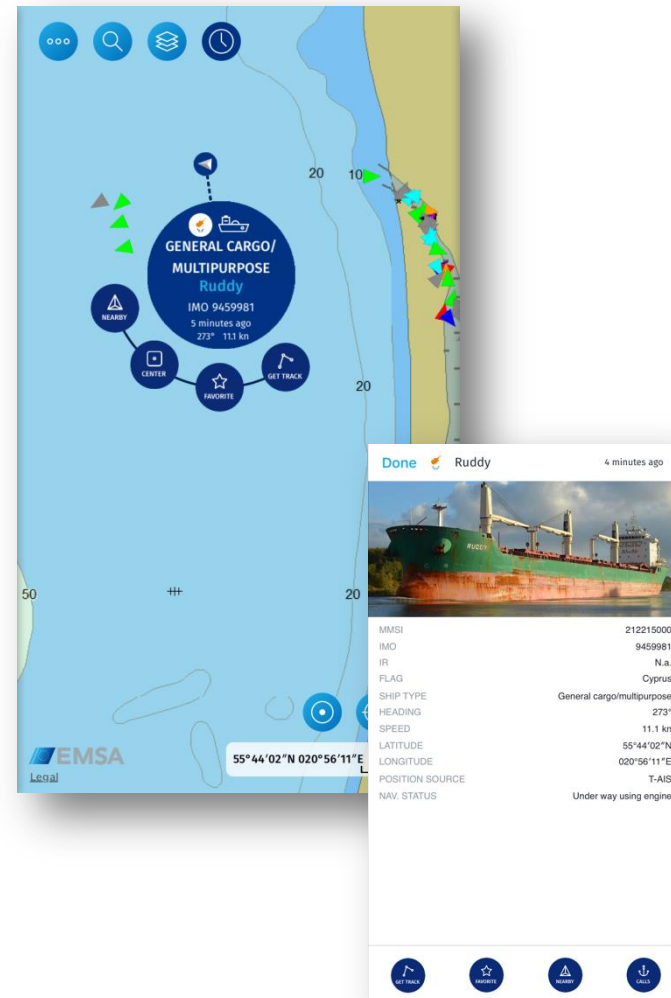
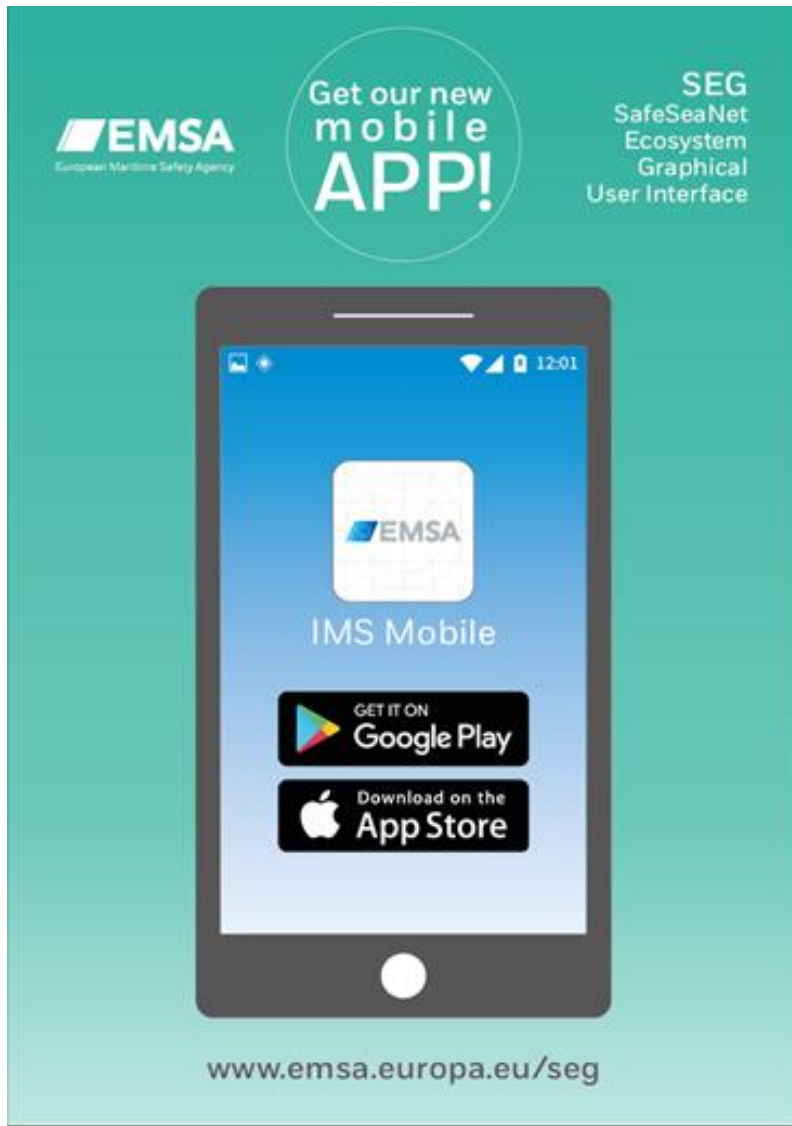
- Access to the SEG is provided via the EMSA Maritime Application Portal
- <https://portal.emsa.europa.eu>
- Username/password has NOT changed
- All existing access data rights policies are maintained



SEG - Map Centric View



IMS App – simplified SEG interface





- IT & operational Helpdesk
- Application monitoring & incident management
- 24/7 services

Contact Details:

Tel: +351 211 209 415

Fax: +351 211 209 480

Email: MaritimeSupportServices@emsa.europa.eu

Evaluation Form & Certificate of attendance

Evaluation Form

The European Maritime Safety Agency (EMSA) is interested in your feedback on this training event related to its content and its organisation. The information provided by you will help EMSA to further improve the quality of its training activities.

This questionnaire relates to:

- administrative arrangements,
- relevance of the training event,
- your overall satisfaction with the training event.

The information received will be kept confidential at EMSA, therefore, please express your views freely. You do not need to put your name on these forms.

Ranking order: from 1 (LOWEST MARK) to 5 (HIGHEST MARK).

START

<https://extranet.emsa.europa.eu/evaluation-questionnaire>

EMSA Training Evaluation Form

- All training materials will be published on the EMSA website.
- An email with the link to the training material will be sent to you one week from today.

<http://emsa.europa.eu/workshops-a-events/189-trainings.html>