



Integrated Maritime Services

UCM#7

Agenda item 7.2.2 – IMS Mobile App

Samy Djavidnia / Senior Project Officer
Department C: Operations/Unit C.4

Lisbon / 12 May 2016

Access to Maritime Applications

SEG



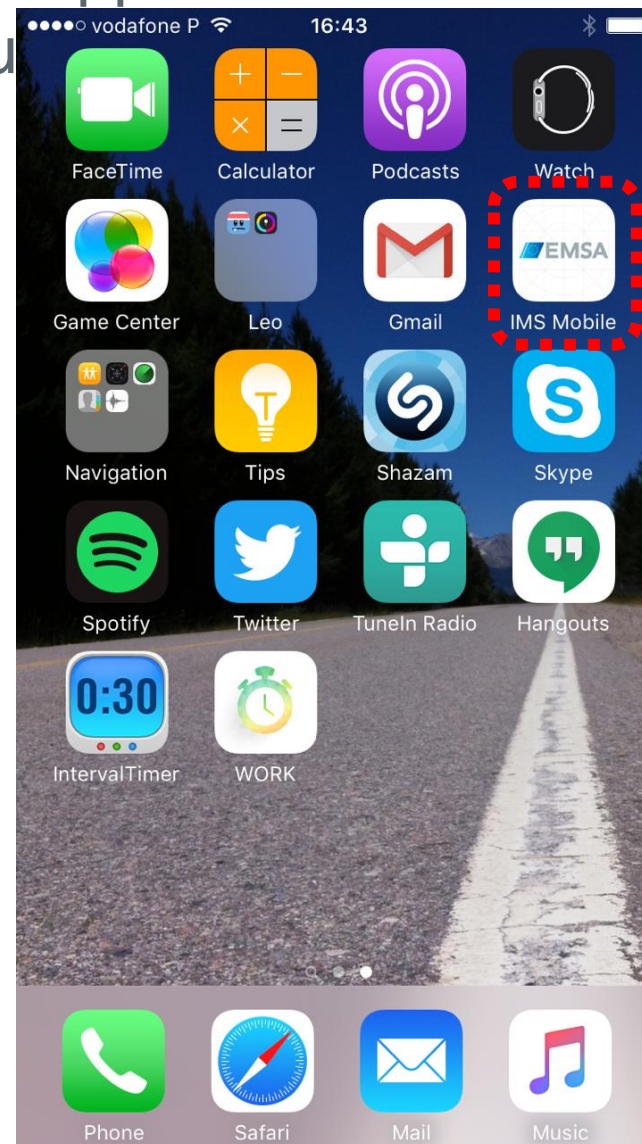
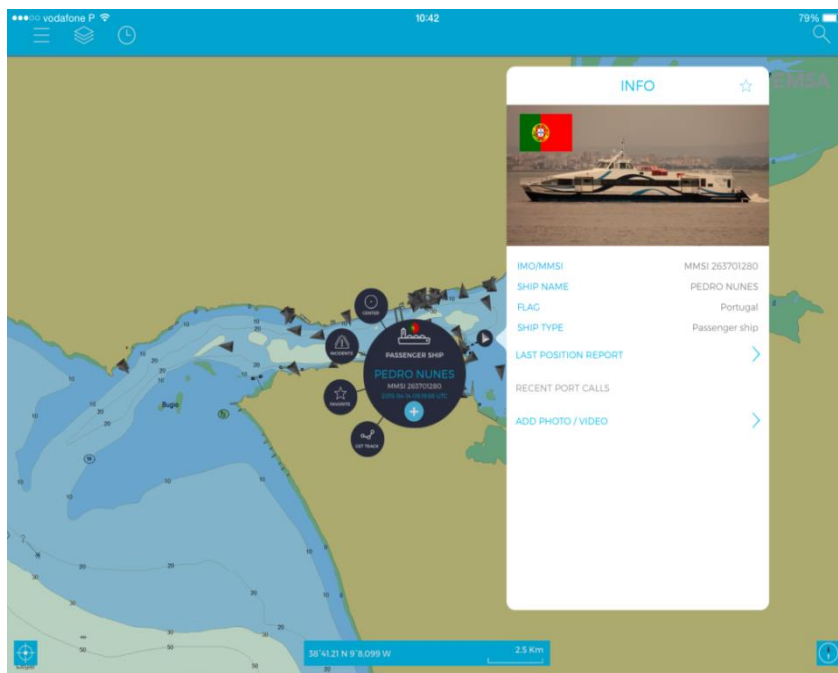
IMS App

SSN Ecosystem GUI: html on desktop, laptop and tablet.

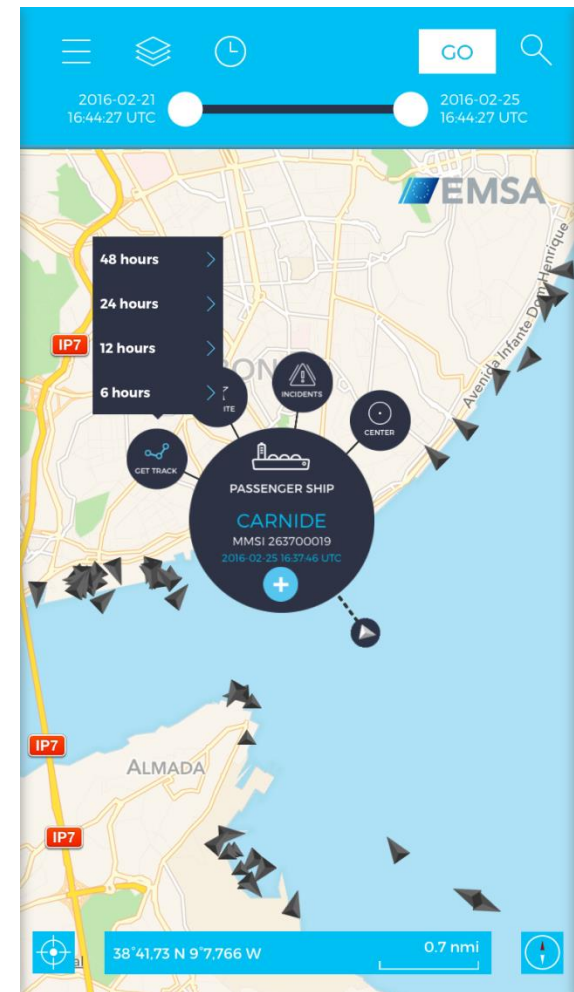
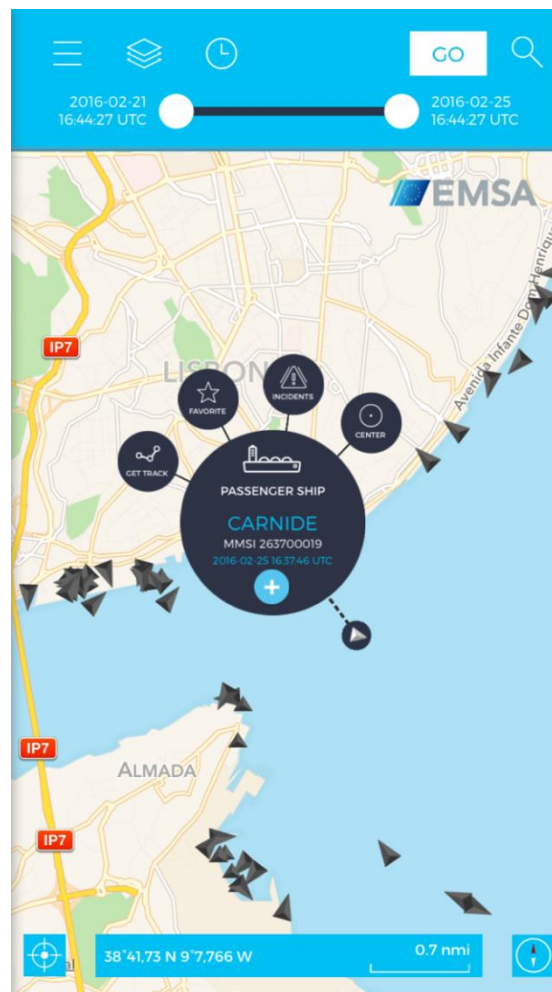
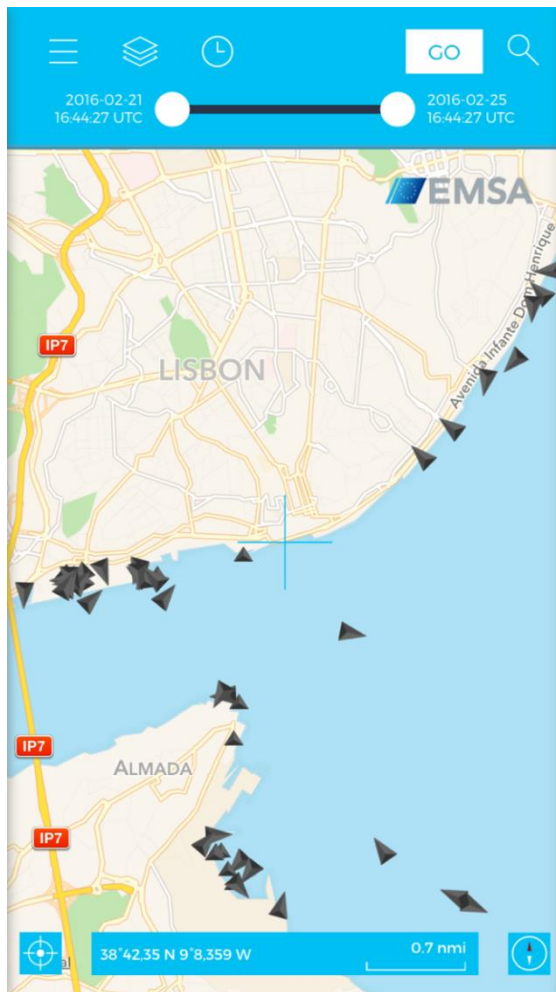
IMS Mobile App: iOS and Android on tablet and smart phone.

IMS Mobile App – Phase I Project

- Development of iOS and Android application to address a set of use cases, including
 - ✓ Vessel position & information
 - ✓ Area centric query
 - ✓ Incident reporting
 - ✓ Oil spill monitoring and feedback



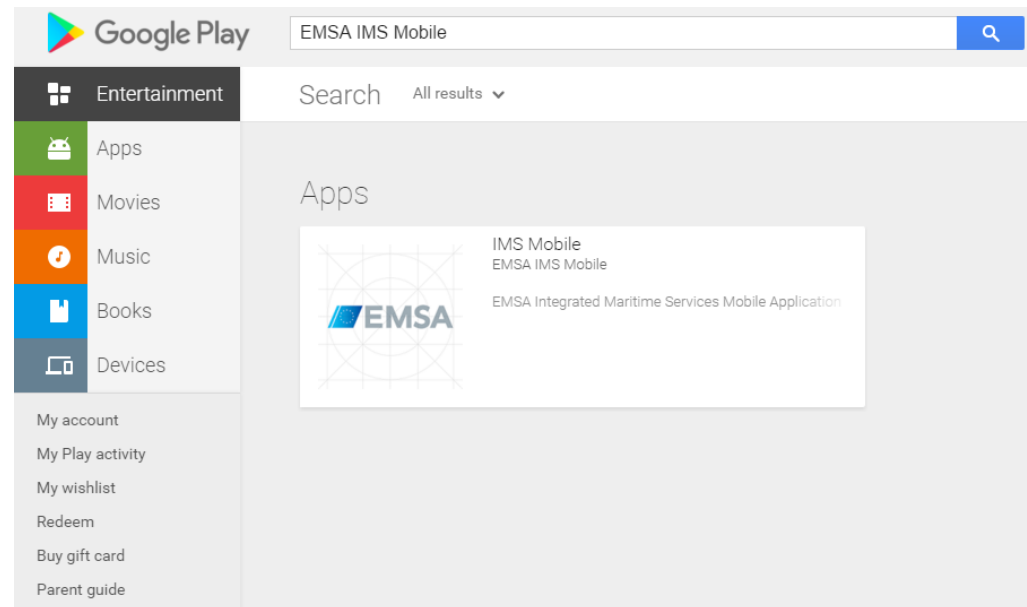
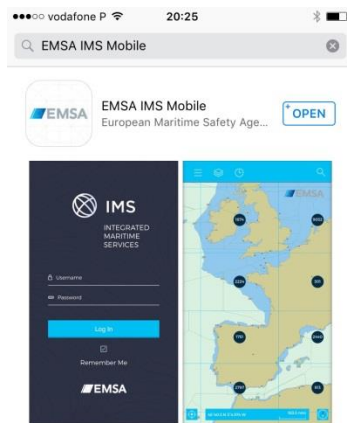
IMS Mobile App



- Tablet (iPad and Android) version
- Mobile phones (iOS and Android) version

Access to IMS Mobile App

- ALL registered IMS users have access to IMS Mobile App.
- Requests for access should be channelled through MS Point of Contact (just like the creation of new users) to Samy Djavidnia.
- The IMS Mobile App can be downloaded from both the App Store (iOS on phone & tablet) and the Google Play Store (Android on tablet) - just search for “EMSA IMS Mobile”.



IMS Mobile App – Phase II Project



■ **Additional functionalities**

- Vessels nearby
- Vessel display symbologies
- Configuration menu
- Replay functionality
- Additional search functionalities
- Display of specific areas
- Filter
- Export current screen

■ **Improvements to current functionalities**

- CSN detections
- Main vessel menu
- Favorite vessel list
- Login screen
- Area centric query improvements
- Incident and CSN selection menus
- Vessel track

One completely new use case (Fisheries control)

- Display of symbology and specific areas associated with fisheries control
- Provision of new fisheries reports (digital content and metadata to be uploaded to CartoDB and the cloud file storage)
- Display of existing fisheries reports
- Automatic generation of a PDF report

Request for active beta-testers

- We welcome volunteers to test and evaluate new IMS Mobile App releases.
- Interested Member States will need to dedicate resources for testing of IMS Mobile App at dedicated periods and for providing overall input on development.

**ALL INTERESTED MEMBER STATES ARE KINDLY REQUESTED TO CONTACT
SAMY DJAVIDNIA STATING THEIR INTEREST.**

Tomorrow during the IMS Training Course there will be a demo.



emsa.europa.eu

 twitter.com/emsa_lisbon

 facebook.com/emsa.lisbon

