

Annex 1

The allocation of the AIS MAREX Base Stations within a FTDMA IALA grid scheme is represented in the figure A-1:

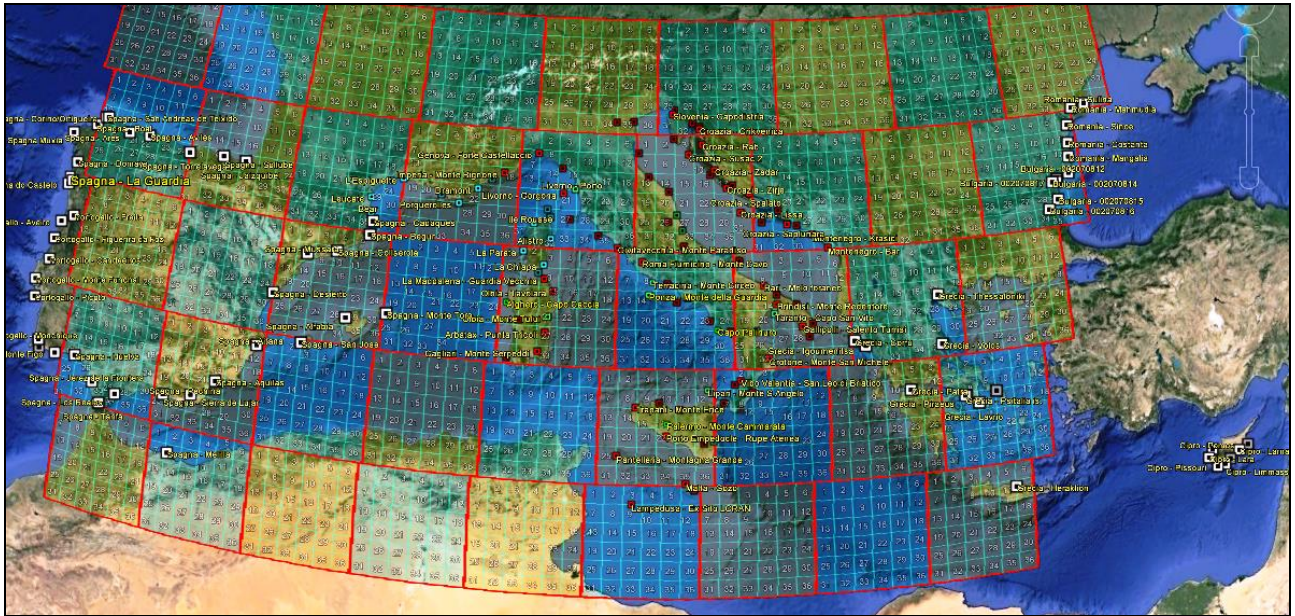


Figure A-1

The occurrences of the BSs located inside each Cell are reported in the Table A-1.

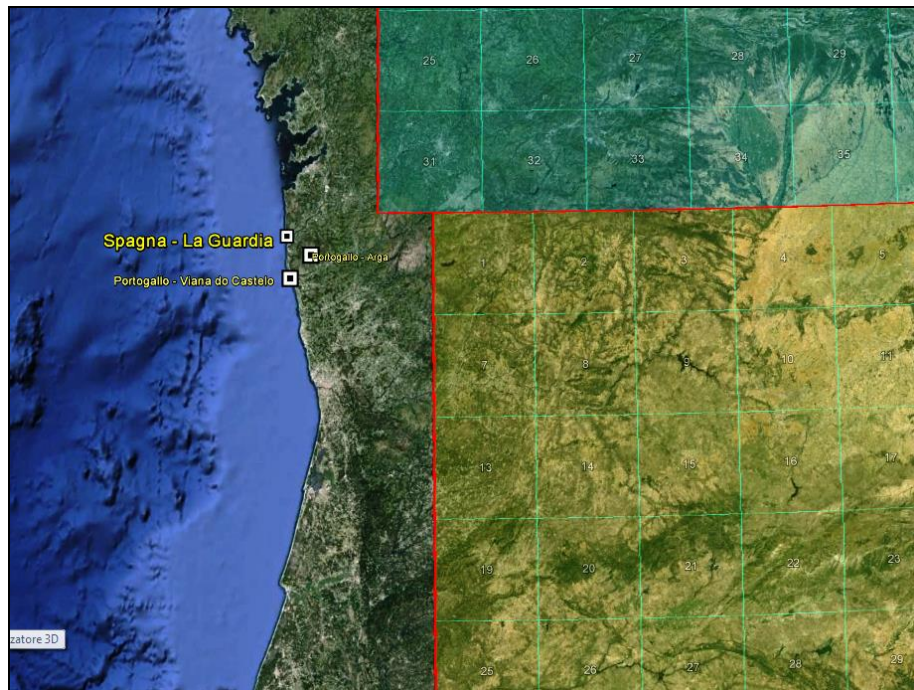
Cell	Occurrence	Cell	Occurrence	Cell	Occurrence	Cell	Occurrence	Cell	Occurrence
1	5	2	5	3	4	4	1	5	2
6	5	7	4	8	8	9	5	10	2
11	3	12	4	13	6	14	8	15	5
16	6	17	6	18	9	19	7	20	6
21	7	22	5	23	8	24	10	25	7
26	5	27	4	28	4	29	4	30	4
31	4	32	3	33	5	34	5	35	7
36	1								

Table A-1

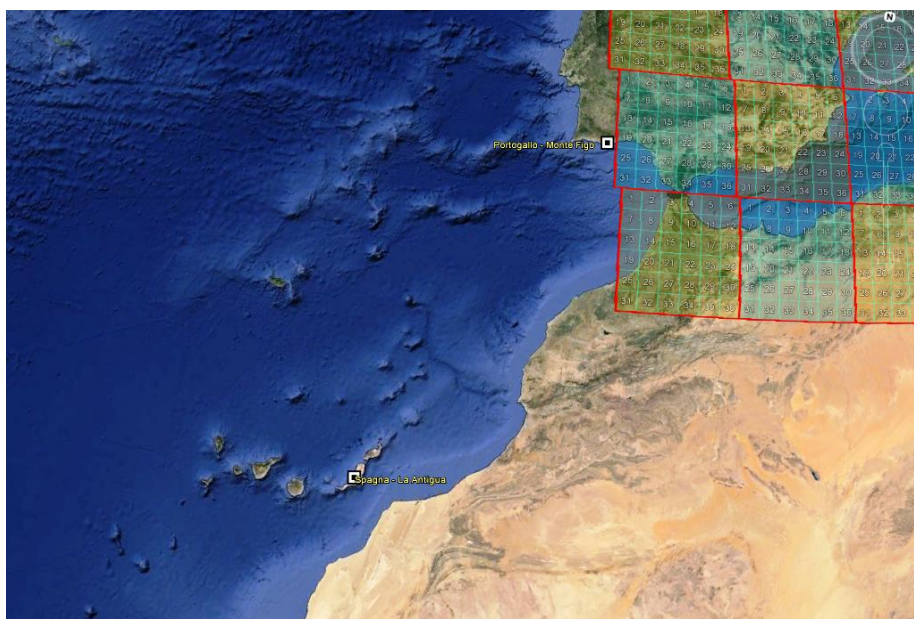
The following conflicts, interesting two or more neighbouring participant Countries, are been found and analysed:

1. Possible conflicts between Spanish and Portuguese BSs

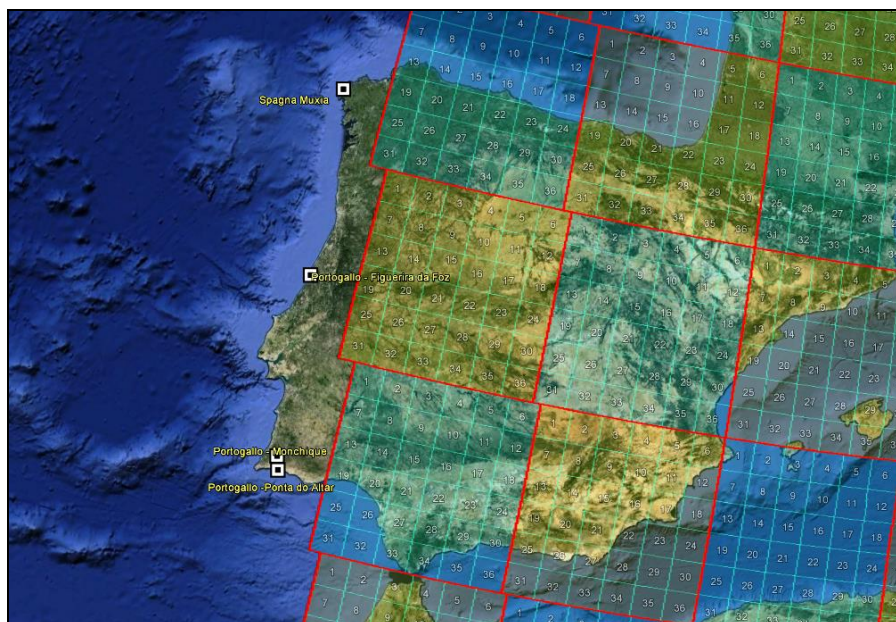
BS Location	MMSI	FLAG	MC row	MC col	Cell
La Guardia	2241123	SPAIN	13	-2	6
Arga	2633000	PORTUGAL	13	-2	6
Viana do Castelo	2633070	PORTUGAL	13	-2	6



BS Location	MMSI	FLAG	MC row	MC col	Cell
Monte Figo	2633060	PORTUGAL	12	-2	19
La Antigua	2241147	SPAIN	9	-4	19

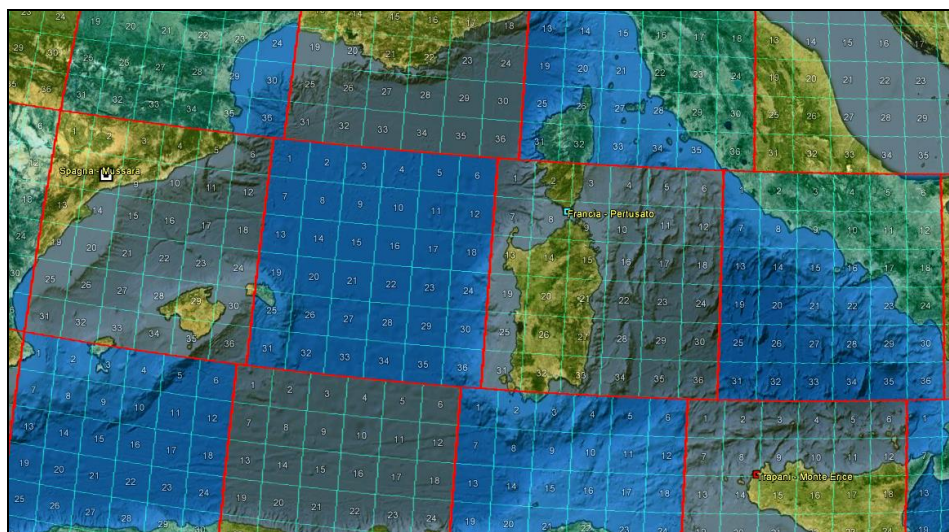


BS Location	MMSI	FLAG	MC row	MC col	Cell
Moncique	2633050	PORTUGAL	12	-2	24
Ponta do Altar	2633100	PORTUGAL	12	-2	24
Figueira da Foz	2633090	PORTUGAL	13	-2	24
Muxia	2241122	SPAIN	14	-2	24



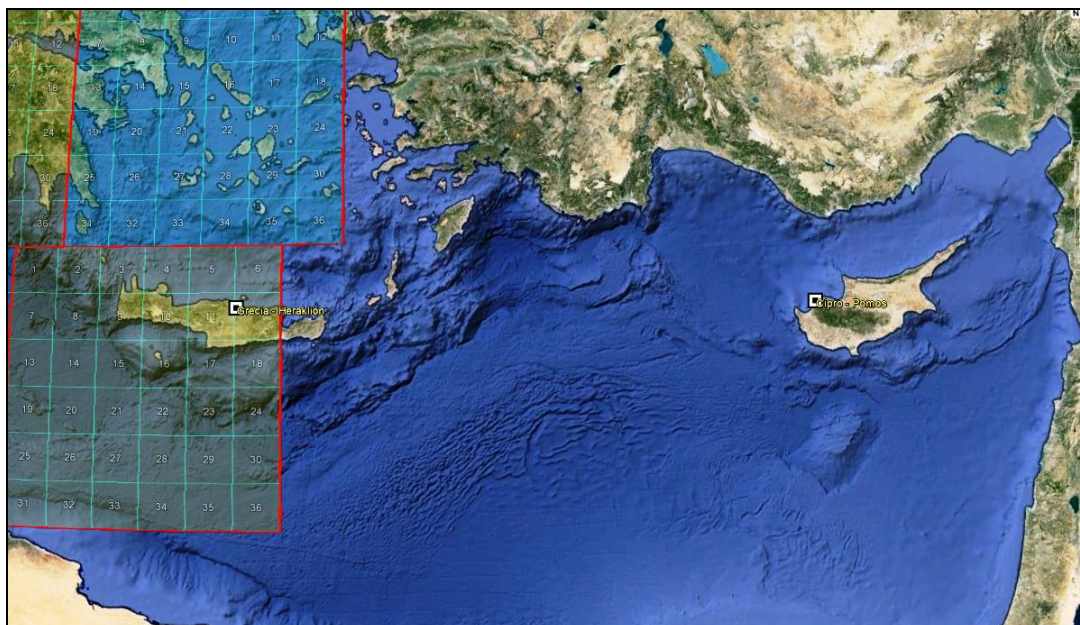
2. Possible conflicts between Spanish, France and Italian BSs:

BS Location	MMSI	FLAG	MC row	MC col	Cell
Mussara	2241129	SPAIN	13	0	8
Pertusato	2288231	FRANCE	13	2	8
Trapani - Monte Erice	2470045	ITALY	12	3	8



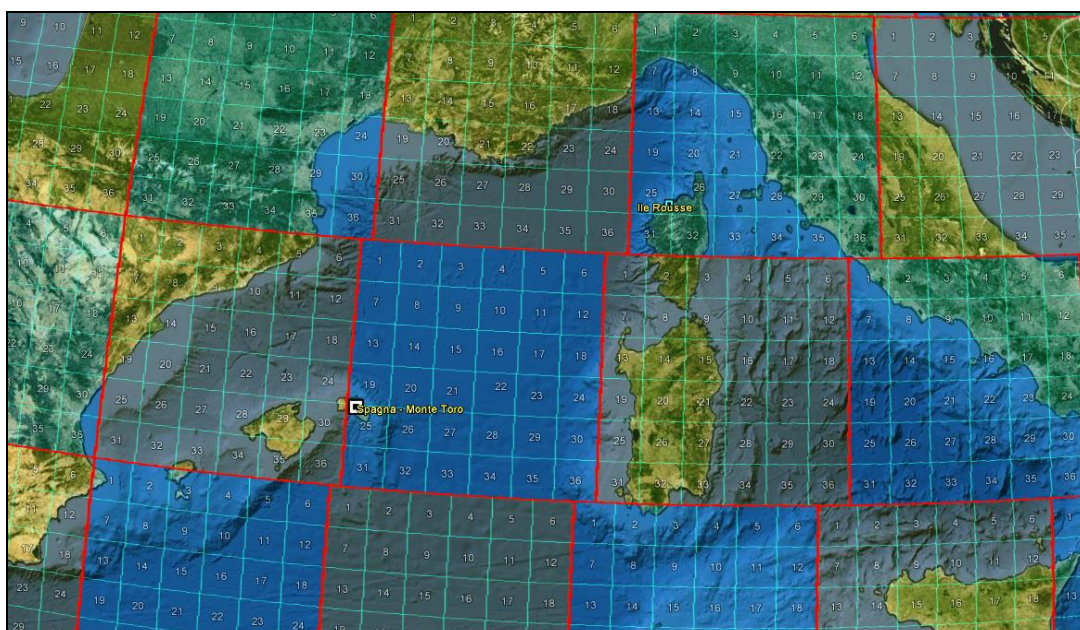
3. Possible conflicts between Greek and Cyprian BSs:

BS Location	MMSI	FLAG	MC row	MC col	Cell
Pomos	2129910	CYPRUS	11	8	12
Heraklion	2393700	GREECE	11	6	12



4. Possible conflicts between France and Spanish BSs:

BS Location	MMSI	FLAG	MC row	MC col	Cell
Monte Toro	2241134	SPAIN	13	1	25
Ile Rousse	2288237	FRANCE	14	2	25

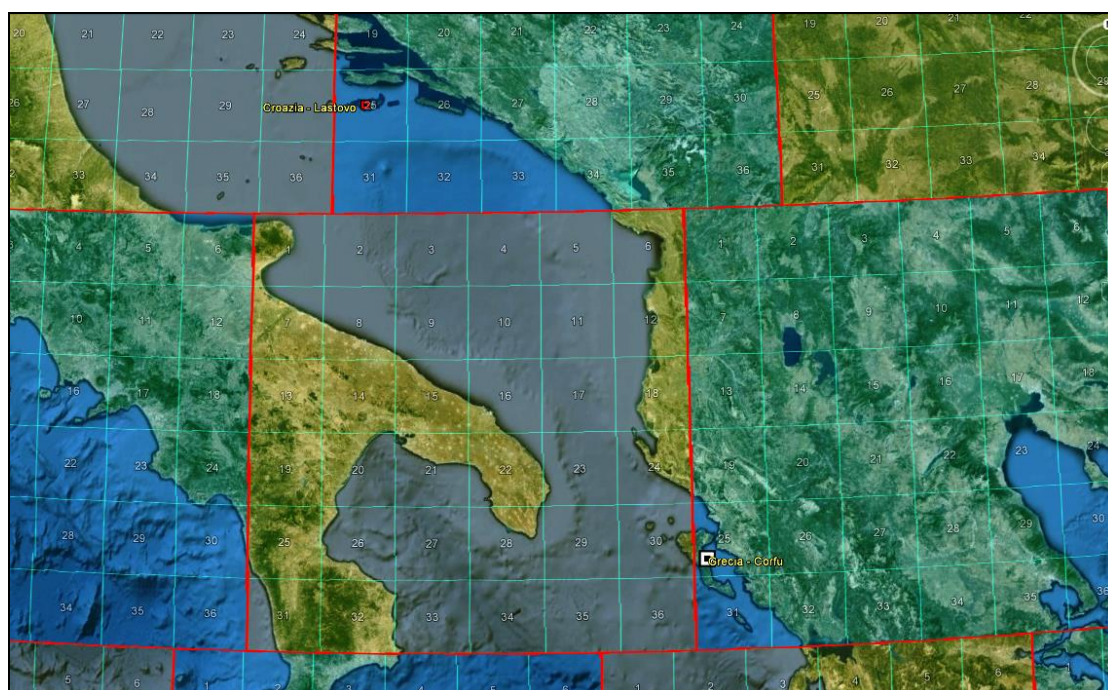


BS Location	MMSI	FLAG	MC row	MC col	Cell
Alfabia	2241133	SPAIN	13	0	29
Bear	2288235	FRANCE	14	0	29



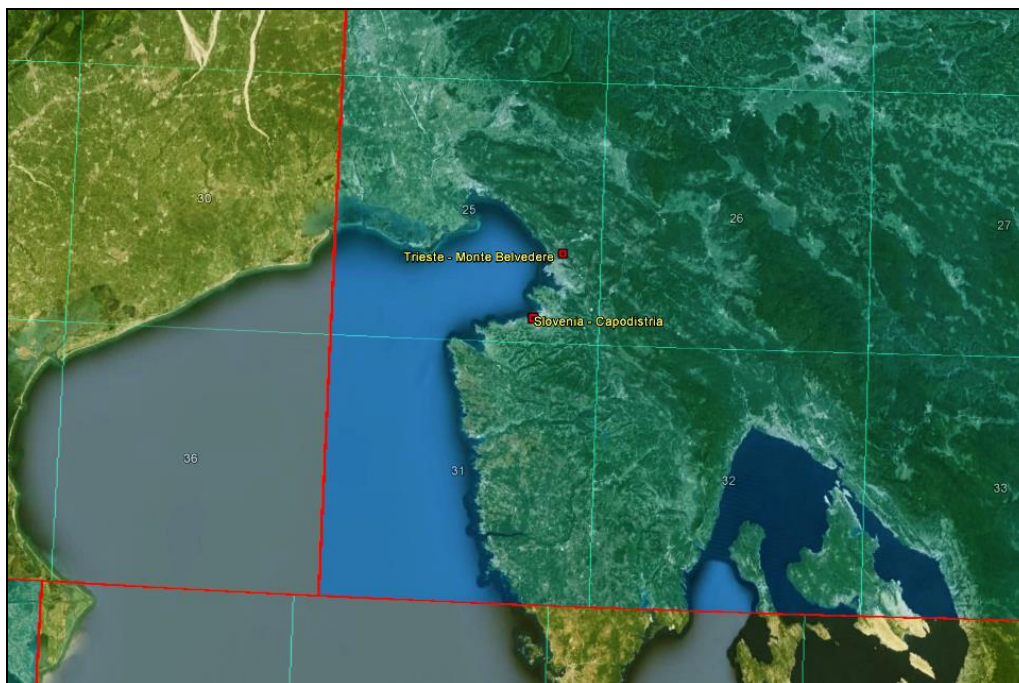
5. Possible conflicts between Greek and Croatian BSs:

BS Location	MMSI	FLAG	MC row	MC col	Cell
Corfu'	2393800	GREECE	13	5	25
Lastovo	2386160	CROATIA	14	4	25



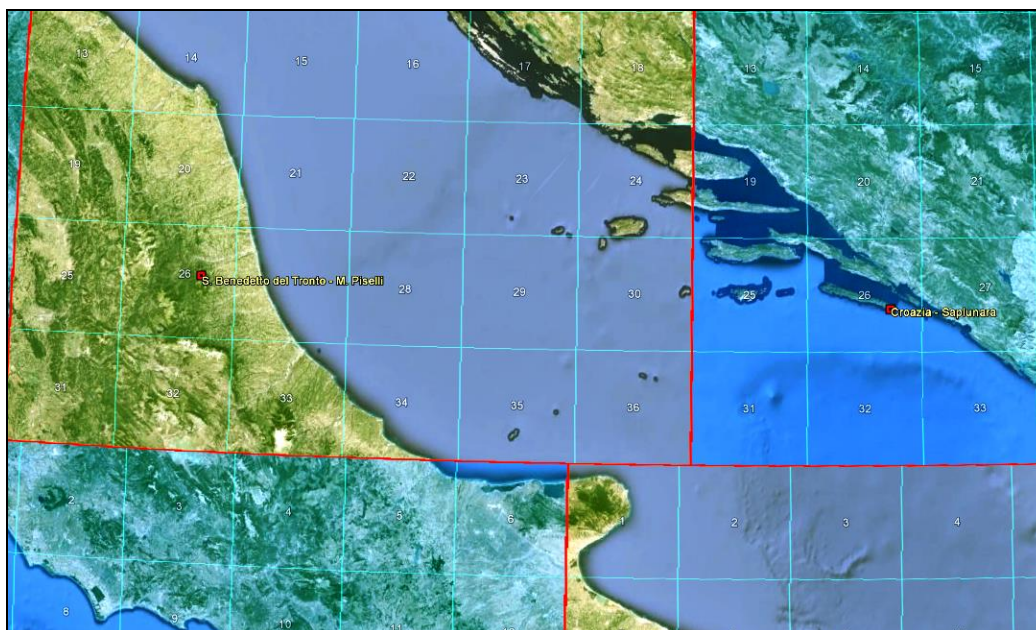
6. Possible conflicts between Italian and Slovenian BSs:

BS Location	MMSI	FLAG	MC row	MC col	Cell
Monte Belvedere	2470020	ITALY	15	3	25
Capodistria	2780200	SLOVENIA	15	3	25

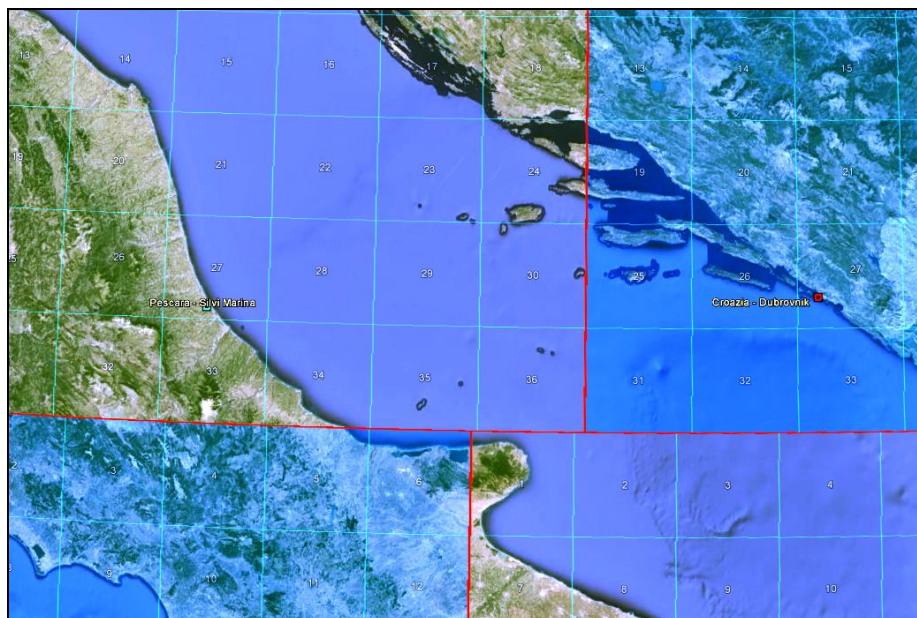


7. Possible conflicts between Italian and Croatian BSs:

BS Location	MMSI	FLAG	MC row	MC col	Cell
Saplunara	2386170	CROATIA	14	4	26
S. Benedetto del Tronto - M. Piselli	2470057	ITALY	14	3	26

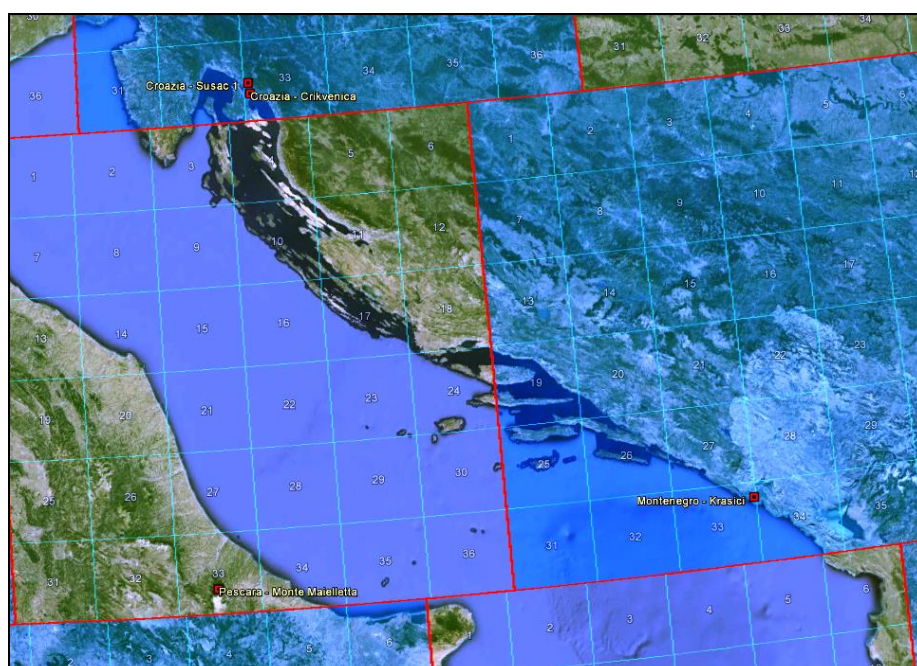


BS Location	MMSI	FLAG	MC row	MC col	Cell
Dubrovnik	2386150	CROATIA	14	4	27
Silvi Marina	2470081	ITALY	14	3	27



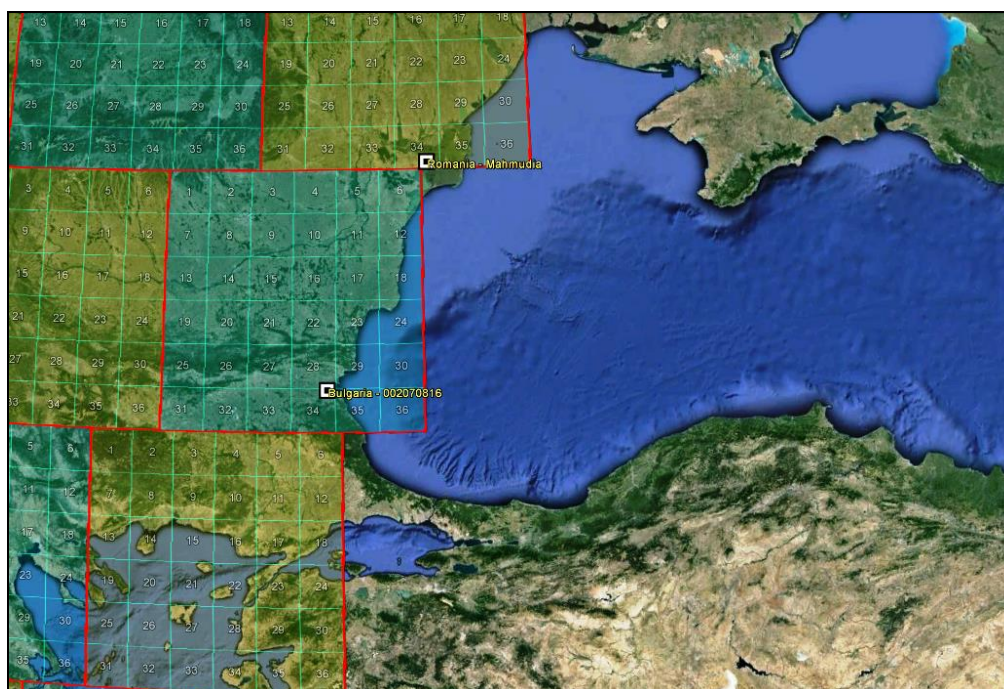
8. Possible conflicts between Italian, Croatian and Montenegrin BSs:

BS Location	MMSI	FLAG	MC row	MC col	Cell
Pescara - Monte Maielletta	2470025	ITALY	14	3	33
Susac	2386050	CROATIA	15	3	33
Crikvenica	2386060	CROATIA	15	3	33
Krasici	2620002	MONTENEGRO	14	4	33



9. Possible conflicts between Bulgarian and Romanian BSs:

BS Location	MMSI	FLAG	MC row	MC col	Cell
Burgas	2070816	BULGARIA	14	6	34
Mahmudia	2640572	ROMANIA	15	6	34



10. Possible conflicts between Italian and Montenegrin BSs:

BS Location	MMSI	FLAG	MC row	MC col	Cell
Venezia - Monte Venda	2470019	ITALY	15	2	34
Bar	2620001	MONTENEGRO	14	4	34

