



*Your Partner in Information
and Communication Technology*

RUBAN
D'HONNEUR
2010

European
Business
Awards™

SPONSORED BY

HSBC 
The world's local bank



IMP Demonstration Project Workshop #2 - Rome 11 Nov. 2013

ISO 9001
ISO 14001
EN 15038

BUREAU VERITAS
Certification



Business Processes at National Level



- ➡ **Results of the Technical Analysis**
- ➡ **Proposed way forward for interfaces with national systems**



Situation at MS

Situation at MS - Overview



			Supported Functions		Supported Interfaces		
			SSN PortPlus	IMO FAL	Web	XML	SOAP
Bulgaria	National SSN system		Yes	No	Yes	Yes	No
	Authorities' systems	3	Unkown	Unkown	Unkown	Unkown	Unkown
	PCS	1	Unkown	Yes (file format)	Yes	No	No
Greece	National SSN system		Yes	No	Unkown	Yes	No
	Authorities' systems	0	Unkown	Unkown	Unkown	Unkown	Unkown
	PCS	0	Unkown	Unkown	Unkown	Unkown	Unkown
Italy	National SSN system		Yes	No	Unkown	Yes	No
	Authorities' systems	2	Unkown	Yes	Yes	No	Yes
	PCS	4	Unkown	Unkown	Unkown	Unkown	Unkown
Malta	National SSN system		Yes	No	Unkown	Yes	No
	Authorities' systems	2	Unkown	Unkown	Unkown	Unkown	Unkown
	PCS	1	Yes	Yes (partially)	Yes	Yes	Unkown
Romania	National SSN system		Yes	No	Yes	Yes	No
	Authorities' systems	0	No	No	No	No	No
	PCS	1	Unkown	Yes (tentative)	Yes	Yes (tentative)	No

Situation at Bulgaria



National SSN system: Yes

Supported system interfaces:

- ✓ **Web** for data entry and consultation of information by the end users.
- ✓ **XML** messages over HTTP/s Internet protocol based on the SSN XMLRG v2.07.

Integration of the arrival and departure notifications: **Yes (VTS)**



Port Community Systems: Port Information Services under the responsibility of the Bulgarian Ports Infrastructure Company.

Supported functions:

- ✓ Electronic submission of ship's arrival and departure and attachment of auxiliary PDF documents.
- ✓ Processing of digitized paper documents including IMO FAL forms 1 to 7, Security, Health, Waste and Certificate forms.

Supported system interfaces: **Web**

External parties involved: **Unknown**



Authorities' electronic information systems:

- ✓ Customs, Boarder Control (Police) & Port of Varna
- ✓ Supported system interfaces: **Unknown**

Situation at Greece



National SSN system: Yes

Supported system interfaces:

- ✓ XML messages over HTTP/s Internet protocol based on the SSN XMLRG v2.07.

Integration of the arrival and departure notifications: Yes



Port Community Systems:

Unknown



Authorities' electronic information systems:

Unknown

Situation at Italy



National SSN system: Yes

Supported system interfaces:

- ✓ XML messages over HTTP/s Internet protocol based on the SSN XMLRG v2.07.

Integration of the arrival and departure notifications: Yes



Port Community Systems: **4 PCS** systems reported



Authorities' electronic information systems:

Customs: **AIDA** (Automazione Integrata Dogane Accise) system

Supported functions:

- ✓ Electronic customs clearance of export and transit operations at the trader's premises.
- ✓ Electronic lodgment of Cargo Manifests.
- ✓ Electronic lodgment of declarations of final importation and exportation, temporary importation and exportation, transit, entry for warehousing.

Supported system interfaces:

- ✓ **SOAP** messages over HTTP/s Authorities involved: **Ministry of Health**

External parties involved: Traders, Companies and business associations, consumers, Government bodies etc.

Situation at Malta



National SSN system: Yes

Supported system interfaces:

- ✓ XML messages over HTTP/s Internet protocol based on the SSN XMLRG v2.07.
- Integration of the arrival and departure notifications: Yes (VTS)



Port Community Systems: Portnet

Supported functions:

- ✓ Electronic submission of ship's arrival and departure, Hazmat and Waste
- ✓ Electronic submission of DPG and DPG list of items (note: DG classification is not reported).
- ✓ Electronic submission of Waste.

Supported system interfaces:

- ✓ **Web** for data entry and consultation of information by the end users.
- ✓ XML messages over HTTP/s Internet protocol based on the SSN XMLRG v2.07 to transmit data to the National System.

External parties involved: **Shipping Agents.**



Authorities' electronic information systems: (paper based)

- ✓ Customs;
- ✓ Boarder Control (Police Administration).

Situation at Romania



National SSN system: Yes

Supported system interfaces:

- ✓ **Web** for data entry and consultation of information by the end users.
- ✓ **XML** messages over HTTP/s Internet protocol based on the SSN XMLRG v2.07.

Integration of the arrival and departure notifications: Yes



Port Community Systems (under construction): MPAC, an integrated system for port community under the responsibility of the National Company Maritime Ports Administration SA Constanta.

Supported functions:

- ✓ Management of maritime and river traffic (ships, arrivals, maneuvers, departures);
- ✓ Cargo traffic;
- ✓ Port events.

Supported system interfaces:

- ✓ **Web**
- ✓ (tentative) **XML** messages over HTTP/s Internet protocol

External parties involved: **Unknown**

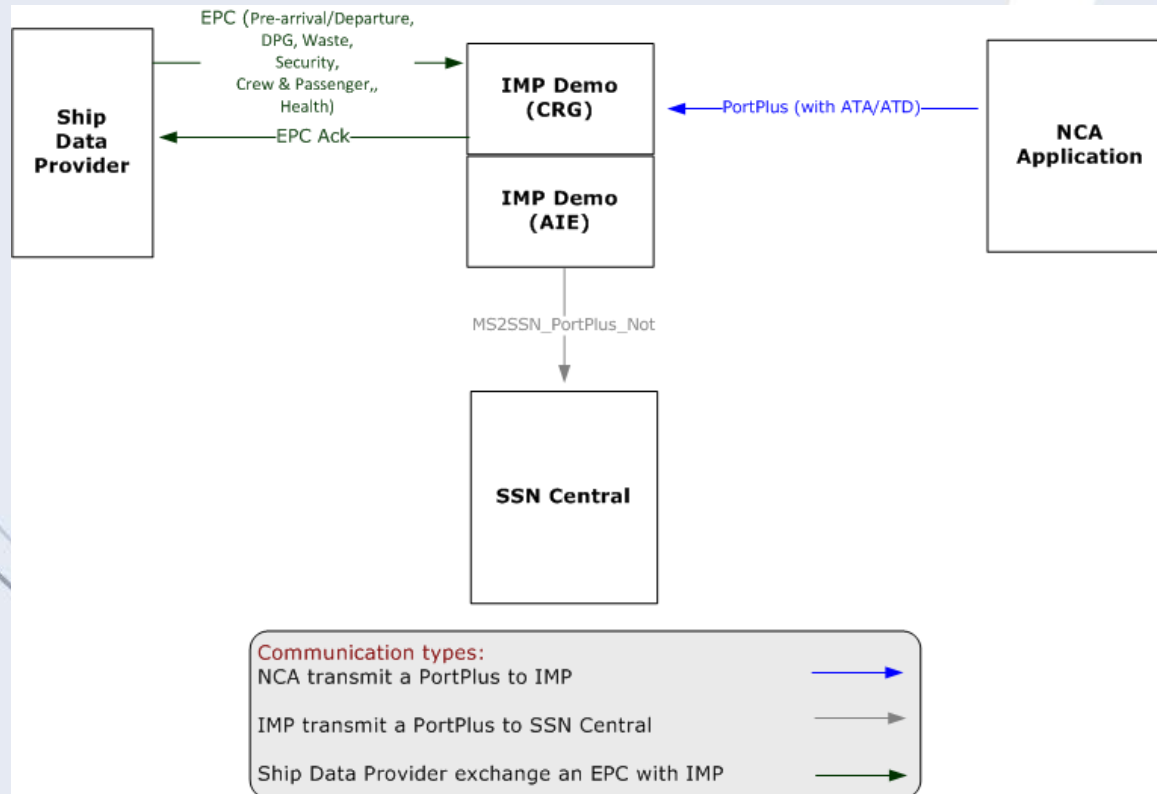


Authorities' electronic information systems: None



Information exchange scenarios with the IMP

Integration with National SSN System (“NCA application”)



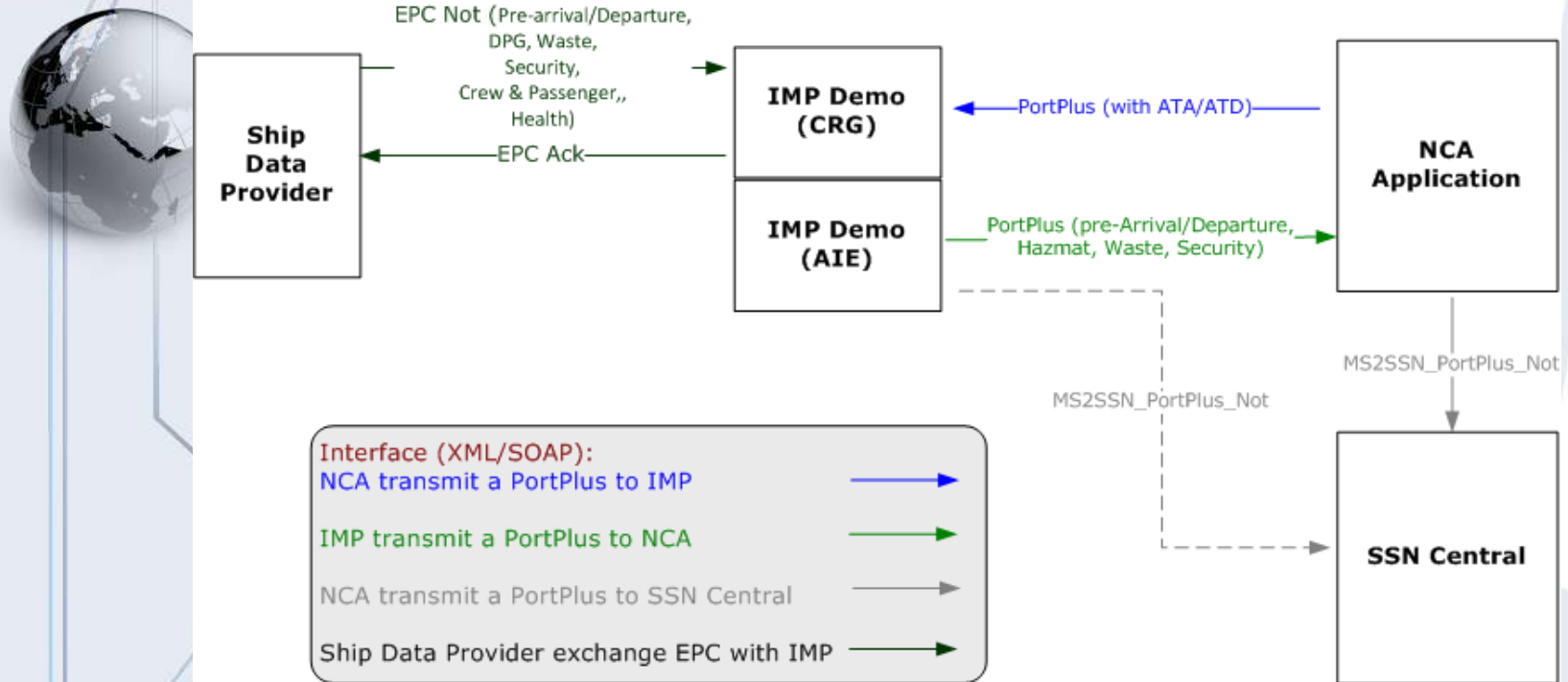
NCA ↔ IMP: XML messages over HTTP/s. MS2SSN_PortPlus_Not to report Arrival (ATA) and/or Departure (ATD) information.

IMP ↔ SSN Central: XML messages over HTTP/s. Revamped MS2SSN_PortPlus_Not.

Ship Data Provider ↔ IMP: XML/SOAP messages over HTTP/s.

EPC Not (Pre-arrival/Departure, DPG, Waste, Security, Crew & Passenger, Health)
EPC Acknowledgement

Integration with National SSN System (“NCA application”)



NCA ↔ IMP: XML messages over HTTP/s. MS2SSN_PortPlus_Not to report Arrival (ATA) and/or Departure (ATD) information.

IMP ↔ NCA: XML messages over HTTP/s. Revamped MS2SSN_PortPlus_Not to report pre-arrival, departure, hazmat (DPG), Waste and/or Security information.

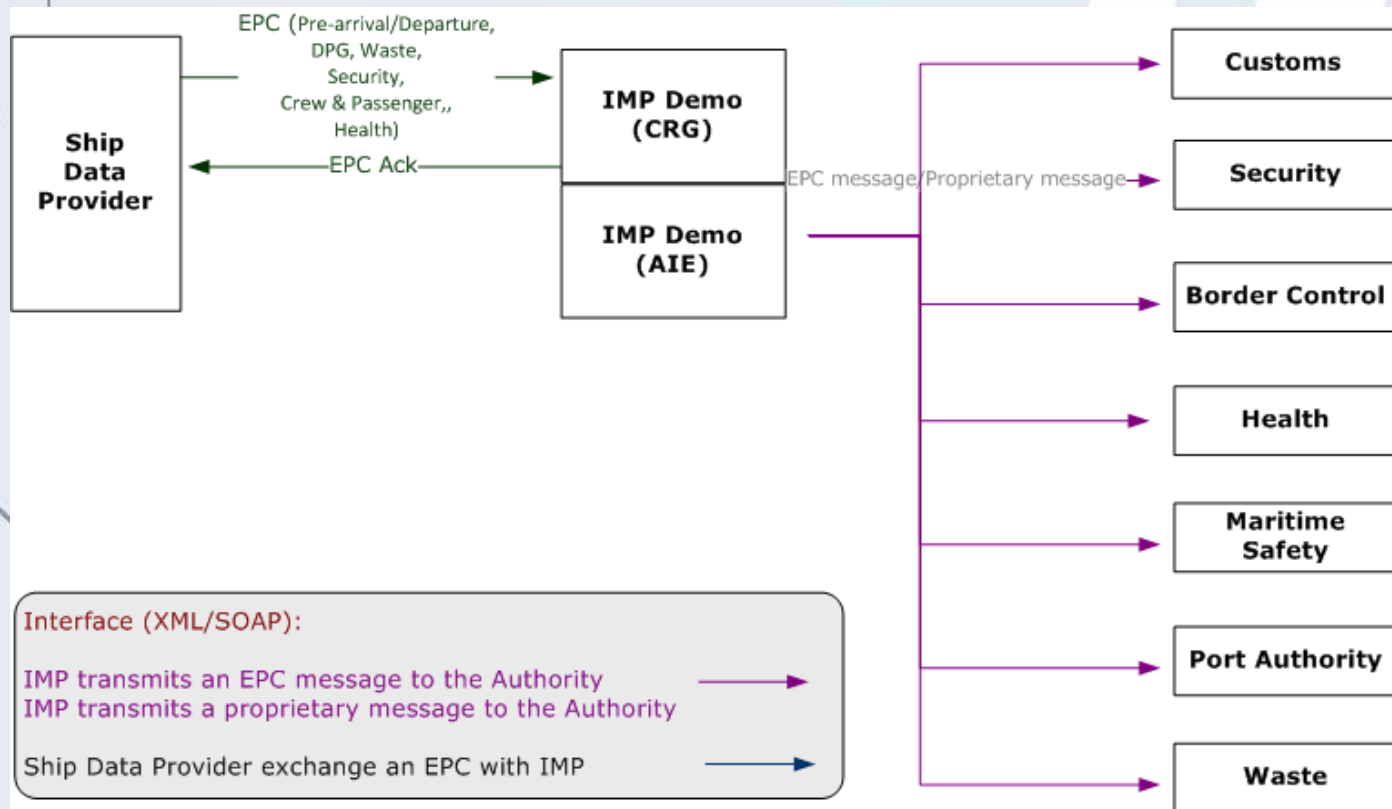
NCA ↔ SSN Central: XML messages over HTTP/s. MS2SSN_PortPlus_Not. Alternatively the PortPlus can be send by the IMP.

Ship Data Provider ↔ IMP: XML/SOAP messages over HTTP/s.

EPC Not (Pre-arrival/Departure, DPG, Waste, Security, Crew & Passenger, Health)

EPC Acknowledgement

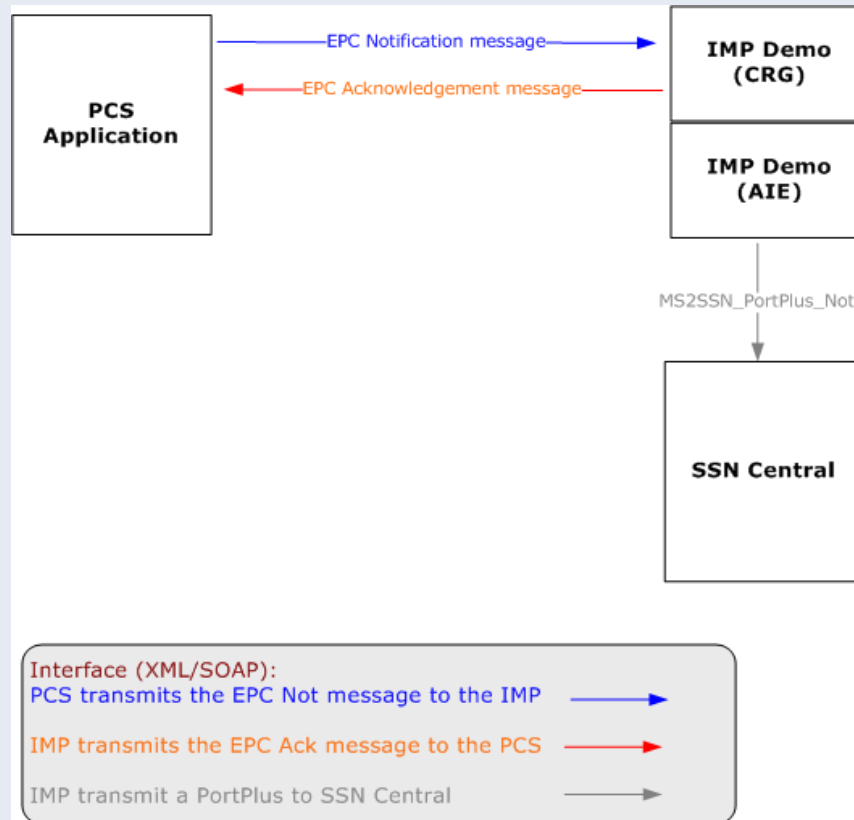
Integration with Authorities systems



IMP (AIE) ↔ Authorities: SOAP 1.2 messages over HTTP/s.
EPC notification message based on ISO28005 or Proprietary messages (XML/SOAP).

Ship Data Provider ↔ IMP: XML/SOAP messages over HTTP/s.
EPC Not (Pre-arrival/Departure, DPG, Waste, Security, Crew & Passenger, Health)
EPC Acknowledgement

Integration with Port Community Systems (PCS)



PCS is acting as the entry point.

PCS ↔ IMP: SOAP 1.2 messages over HTTP/s.

EPC Notification message, EPC Acknowledgement messages based on ISO28005.

IMP ↔ SSN Central: SOAP 1.2 messages over HTTP/s. Revamped MS2SSN_PortPlus_Not.



Thank you for your attention

ISO 9001
ISO 14001
EN 15038

BUREAU VERITAS
Certification

